

# SH3GL1 Antibody



PACO44689

---

## Product Information

**Size:**

50ul

**Reactivity:**

Human

**Source:**

Rabbit

**Isotype:**

IgG

**Applications:**

ELISA, WB, IHC

**Recommended dilutions:**

ELISA:1:2000-1:10000, WB:1:1000-1:5000,  
IHC:1:20-1:200

**Protein Background:**

Implicated in endocytosis. May recruit other proteins to membranes with high curvature.

**Gene ID:**

SH3GL1

**Uniprot**

Q99961

**Synonyms:**

Endophilin-A2 (EEN fusion partner of MLL) (Endophilin-2) (Extra eleven-nineteen leukemia fusion gene protein) (EEN) (SH3 domain protein 2B) (SH3 domain-containing GRB2-like protein 1), SH3GL1, CNSA1 SH3D2B

**Immunogen:**

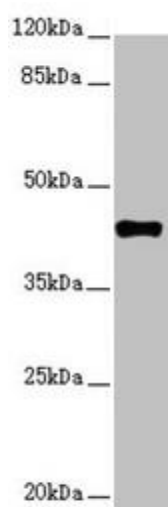
Recombinant Human Endophilin-A2 protein (219-368AA).

**Storage:**

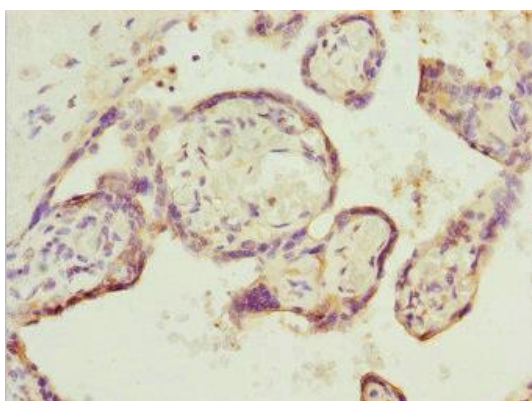
PBS with 0.02% sodium azide, 50% glycerol, pH7.3.

## Product Images

---



Western blot. All lanes: SH3GL1 antibody at 2.48 $\mu$ g/ml + HT29 whole cell lysate. Secondary. Goat polyclonal to rabbit IgG at 1/10000 dilution. Predicted band size: 42, 37, 35 kDa. Observed band size: 42 kDa.



Immunohistochemistry of paraffin-embedded human placenta tissue using PACO44689 at dilution of 1:100.