

# TM9SF1 Antibody



PACO44704

---

## Product Information

**Size:**

50ul

**Reactivity:**

Human, Mouse

**Source:**

Rabbit

**Isotype:**

IgG

**Applications:**

ELISA, WB, IHC, IF

**Recommended dilutions:**

ELISA:1:2000-1:10000, WB:1:1000-1:5000,  
IHC:1:20-1:200, IF:1:50-1:200

**Protein Background:**

Plays an essential role in autophagy.

**Gene ID:**

TM9SF1

**Uniprot**

O15321

**Synonyms:**

Transmembrane 9 superfamily member 1 (MP70 protein family member) (hMP70),  
TM9SF1

**Immunogen:**

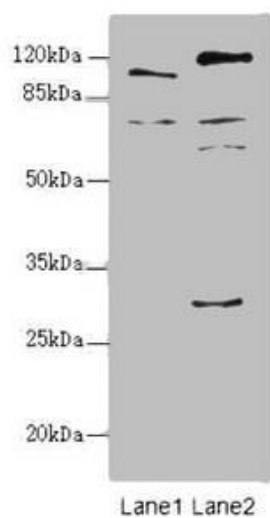
Recombinant Human Transmembrane 9 superfamily member 1 protein (28-230AA).

**Storage:**

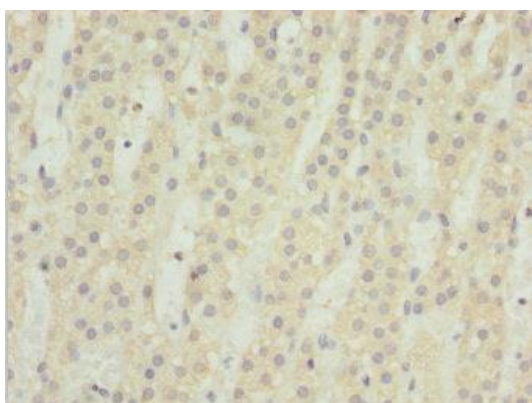
PBS with 0.02% sodium azide, 50% glycerol, pH7.3.

## Product Images

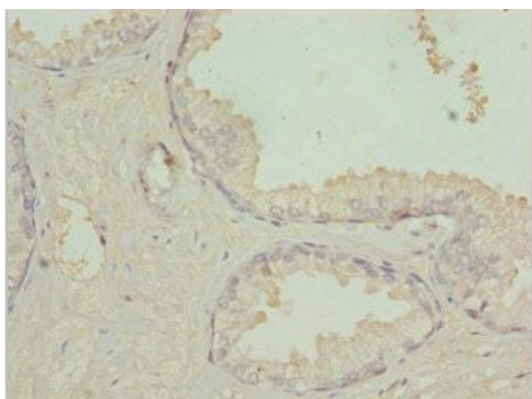
---



Western blot. All lanes: TM9SF1 antibody at 2.18 $\mu$ g/ml. Lane 1: Mouse liver tissue. Lane 2: Mouse kidney tissue. Secondary: Goat polyclonal to rabbit IgG at 1/10000 dilution. Predicted band size: 69, 56 kDa. Observed band size: 69, 110, 59, 28 kDa.



Immunohistochemistry of paraffin-embedded human adrenal gland tissue using PACO44704 at dilution of 1:100.



Immunohistochemistry of paraffin-embedded human prostate cancer using PACO44704 at dilution of 1:100.