

PACO44716

---

## Product Information

**Size:**

50ul

**Reactivity:**

Human

**Source:**

Rabbit

**Isotype:**

IgG

**Applications:**

ELISA, IHC

**Recommended dilutions:**

ELISA:1:2000-1:10000, IHC:1:20-1:200

**Protein Background:**

Plays an important role in the autophagy pathway, which is the major intracellular degradation system by which cytoplasmic materials are packaged into autophagosomes and delivered to lysosomes for degradation.

**Gene ID:**

WDR45

**Uniprot**

Q9Y484

**Synonyms:**

WD repeat domain phosphoinositide-interacting protein 4 (WIPI-4) (WD repeat-containing protein 45), WDR45, WDRX1 WDRX14 WIPI4

**Immunogen:**

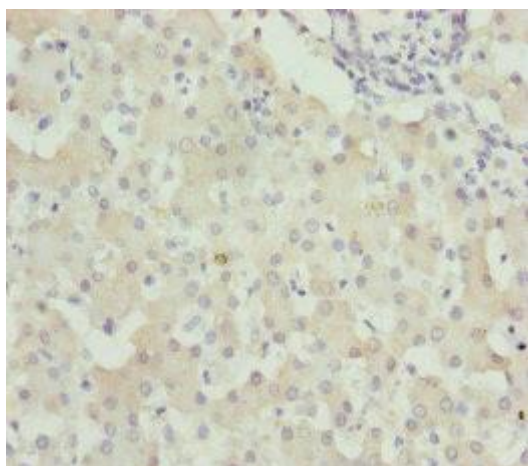
Recombinant Human WD repeat domain phosphoinositide-interacting protein 4 protein (1-360AA).

**Storage:**

PBS with 0.02% sodium azide, 50% glycerol, pH7.3.

## Product Images

---



Immunohistochemistry of paraffin-embedded human liver tissue using PACO44716 at dilution of 1:100.