

# POC1A Antibody



PACO44719

---

## Product Information

**Size:**

50ul

**Reactivity:**

Human

**Source:**

Rabbit

**Isotype:**

IgG

**Applications:**

ELISA, WB, IHC

**Recommended dilutions:**

ELISA:1:2000-1:10000, WB:1:1000-1:5000,  
IHC:1:20-1:200

**Protein Background:**

Plays an important role in centriole assembly and/or stability and ciliogenesis. Involved in early steps of centriole duplication, as well as in the later steps of centriole length control. Acts in concert with POC1B to ensure centriole integrity and proper mitotic spindle formation.

**Gene ID:**

POC1A

**Uniprot**

Q8NBT0

**Synonyms:**

POC1 centriolar protein homolog A (Pix2) (Proteome of centriole protein 1A) (WD repeat-containing protein 51A), POC1A, WDR51A

**Immunogen:**

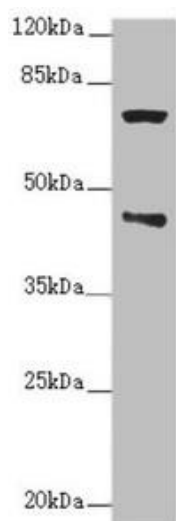
Recombinant Human POC1 centriolar protein homolog A protein (138-407AA).

**Storage:**

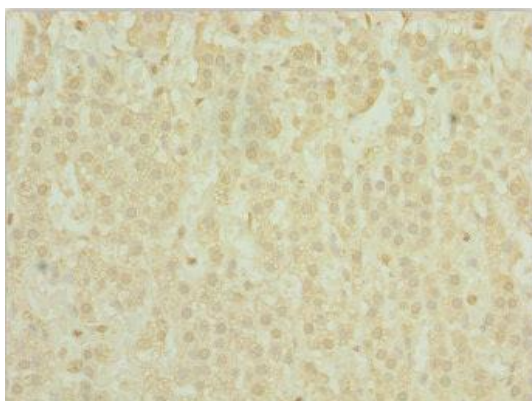
PBS with 0.02% sodium azide, 50% glycerol, pH7.3.

## Product Images

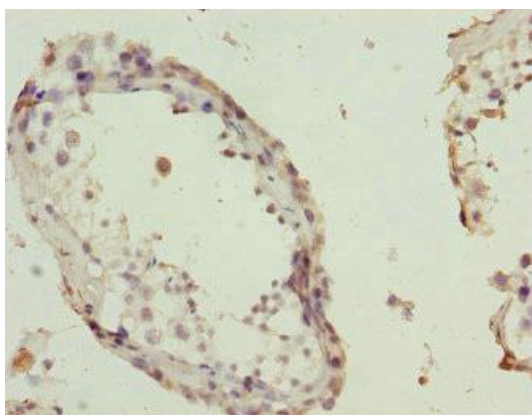
---



Western blot. All lanes: POC1A antibody at 2.76µg/ml + Raji whole cell lysate. Secondary. Goat polyclonal to rabbit IgG at 1/10000 dilution. Predicted band size: 46, 40, 41 kDa. Observed band size: 46, 70 kDa.



Immunohistochemistry of paraffin-embedded human adrenal gland tissue using PACO44719 at dilution of 1:100.



Immunohistochemistry of paraffin-embedded human testis tissue using PACO44719 at dilution of 1:100.