

PACO44762

Product Information

Size:

50ul

Reactivity:

Human

Source:

Rabbit

Isotype:

IgG

Applications:

ELISA, IHC

Recommended dilutions:

ELISA:1:2000-1:10000, IHC:1:20-1:200

Protein Background:

Pseudokinase that acts as an allosteric activator of the Golgi serine/threonine protein kinase FAM20C and is involved in biomineralization of teeth. Forms a complex with FAM20C and increases the ability of FAM20C to phosphorylate the proteins that form the 'matrix' that guides the deposition of the enamel minerals.

Gene ID:

FAM20A

Uniprot

Q96MK3

Synonyms:

Pseudokinase FAM20A, FAM20A

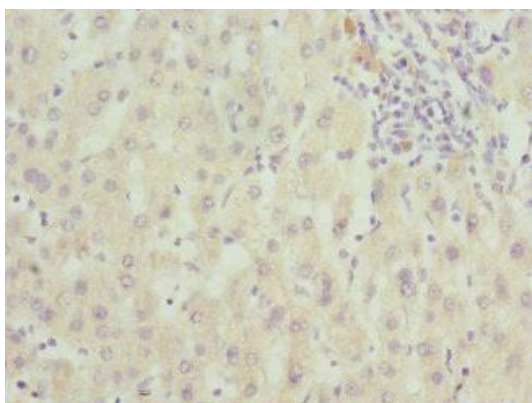
Immunogen:

Recombinant Human Pseudokinase FAM20A protein (140-240AA).

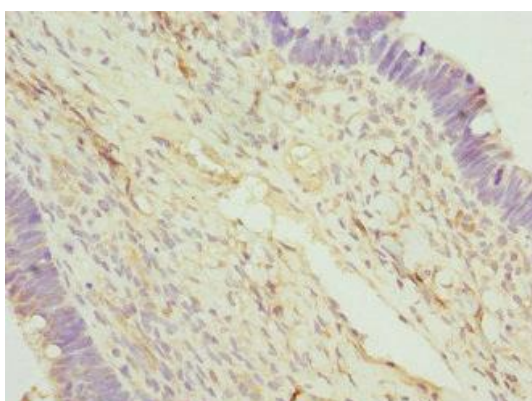
Storage:

PBS with 0.02% sodium azide, 50% glycerol, pH7.3.

Product Images



Immunohistochemistry of paraffin-embedded human liver cancer using PACO44762 at dilution of 1:100.



Immunohistochemistry of paraffin-embedded human ovarian cancer using PACO44762 at dilution of 1:100.