

Product Information

Size:

50ul

Reactivity:

Human

Source:

Rabbit

Isotype:

IgG

Applications:

ELISA, IHC

Recommended dilutions:

ELISA:1:2000-1:10000, IHC:1:20-1:200

Protein Background:

Activates CDC42, a member of the Ras-like family of Rho- and Rac proteins, by exchanging bound GDP for free GTP. Mediates VEGF-induced CDC42 activation. May regulate proangiogenic action of VEGF in vascular endothelial cells, including network formation, directional movement and proliferation. May play a role in regulating the actin cytoskeleton and cell shape.

Gene ID:

FGD5

Uniprot

Q6ZNL6

Synonyms:

FYVE, RhoGEF and PH domain-containing protein 5 (Zinc finger FYVE domain-containing protein 23), FGD5, ZFYVE23

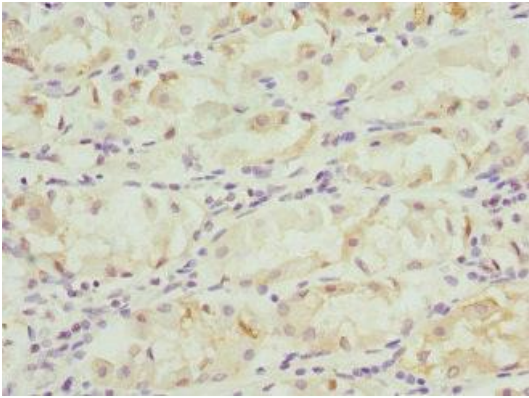
Immunogen:

Recombinant Human FYVE, RhoGEF and PH domain-containing protein 5 protein (1203-1462AA).

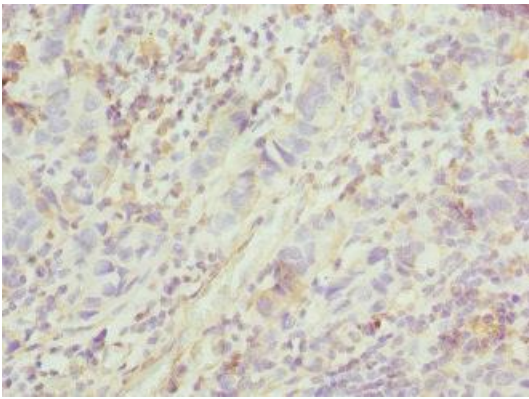
Storage:

PBS with 0.02% sodium azide, 50% glycerol, pH7.3.

Product Images



Immunohistochemistry of paraffin-embedded human gastric cancer using PACO44763 at dilution of 1:100.



Immunohistochemistry of paraffin-embedded human bladder cancer using PACO44763 at dilution of 1:100.