

# GPR68 Antibody



PACO44768

---

## Product Information

**Size:**

50ul

**Reactivity:**

Human, Mouse

**Source:**

Rabbit

**Isotype:**

IgG

**Applications:**

ELISA, WB, IHC

**Recommended dilutions:**

ELISA:1:2000-1:10000, WB:1:1000-1:5000,  
IHC:1:20-1:200

**Protein Background:**

Proton-sensing receptor involved in pH homeostasis. May represents an osteoblastic pH sensor regulating cell-mediated responses to acid, sis in bone. Mediates its action by association with G proteins that stimulates inositol phosphate (IP) production or Ca(2+) mobilization. The receptor is almost silent at pH 7.8 but fully activated at pH 6.8. Function also as a metastasis suppressor gene in prostate cancer.

**Gene ID:**

GPR68

**Uniprot**

Q15743

**Synonyms:**

Ovarian cancer G-protein coupled receptor 1 (OGR-1) (G-protein coupled receptor 68) (GPR12A) (Sphingosylphosphorylcholine receptor), GPR68, OGR1

**Immunogen:**

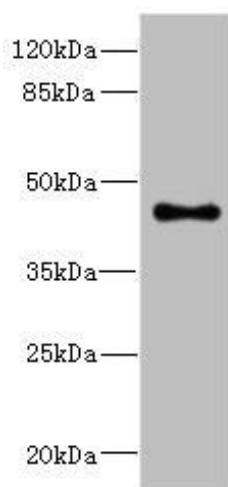
Recombinant Human Ovarian cancer G-protein coupled receptor 1 protein (276-365AA).

**Storage:**

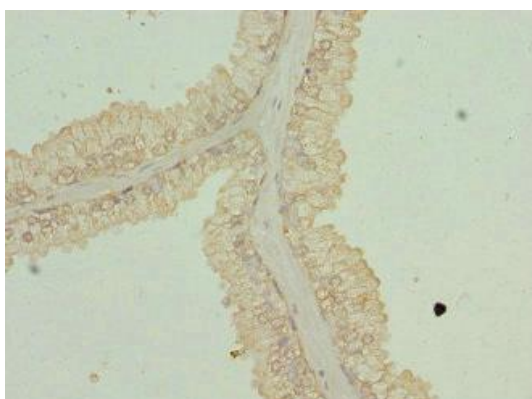
PBS with 0.02% sodium azide, 50% glycerol, pH7.3.

## Product Images

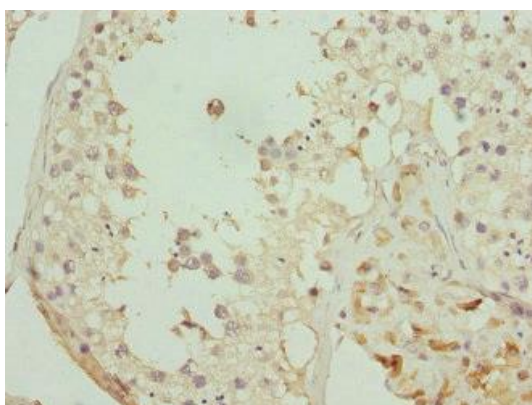
---



Western blot. All lanes: GPR68 antibody at 4.95 µg/ml + Mouse lung tissue. Secondary. Goat polyclonal to rabbit IgG at 1/10000 dilution. Predicted band size: 41 kDa. Observed band size: 41 kDa.



Immunohistochemistry of paraffin-embedded human prostate cancer using PACO44768 at dilution of 1:100.



Immunohistochemistry of paraffin-embedded human testis tissue using PACO44768 at dilution of 1:100.