

SH3GLB2 Antibody



PACO44800

Product Information

Size:

50ul

Reactivity:

Human

Source:

Rabbit

Isotype:

IgG

Applications:

ELISA, IHC

Recommended dilutions:

ELISA:1:2000-1:10000, IHC:1:20-1:200

Protein Background:

cytoplasm, nucleus.

Gene ID:

SH3GLB2

Uniprot

Q9NR46

Synonyms:

Endophilin-B2 (SH3 domain-containing GRB2-like protein B2), SH3GLB2, KIAA1848

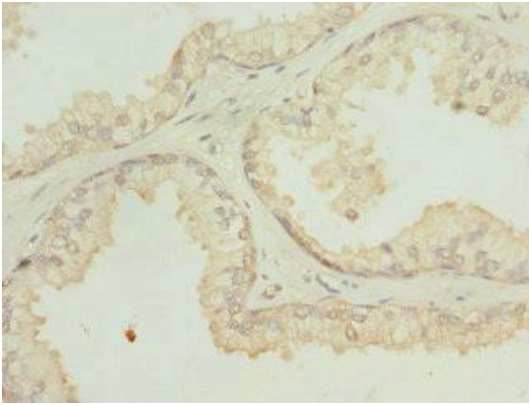
Immunogen:

Recombinant Human Endophilin-B2 protein (1-250AA).

Storage:

PBS with 0.02% sodium azide, 50% glycerol, pH7.3.

Product Images



Immunohistochemistry of paraffin-embedded human prostate cancer using PACO44800 at dilution of 1:100.