

## Product Information

**Size:**

50ul

**Reactivity:**

Human

**Source:**

Rabbit

**Isotype:**

IgG

**Applications:**

ELISA, IHC, IF

**Recommended dilutions:**

ELISA:1:2000-1:10000, IHC:1:20-1:200,  
IF:1:50-1:200

**Protein Background:**

Plays a role in the initiation of autophagy. In the retina, might be involved in the process of photoreceptor cells renewal and recycling to preserve visual function. Induces apoptotic cell death when coexpressed with DRAM1.

**Gene ID:**

DRAM2

**Uniprot**

Q6UX65

**Synonyms:**

DNA damage-regulated autophagy modulator protein 2 (Transmembrane protein 77),  
DRAM2, TMEM77

**Immunogen:**

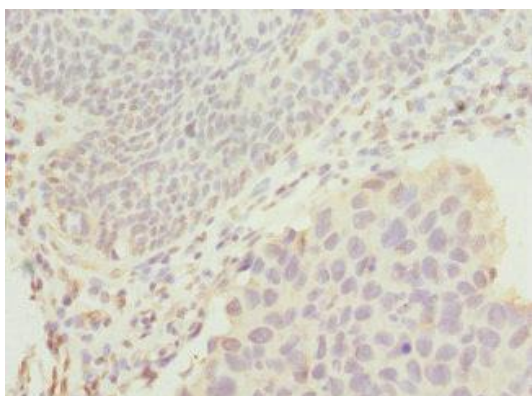
Recombinant Human DNA damage-regulated autophagy modulator protein 2 protein  
(182-266AA).

**Storage:**

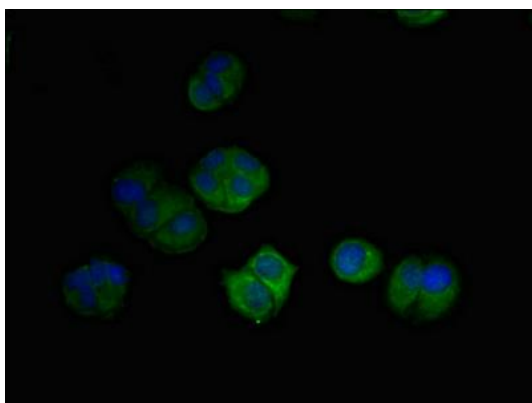
PBS with 0.02% sodium azide, 50% glycerol, pH7.3.

## Product Images

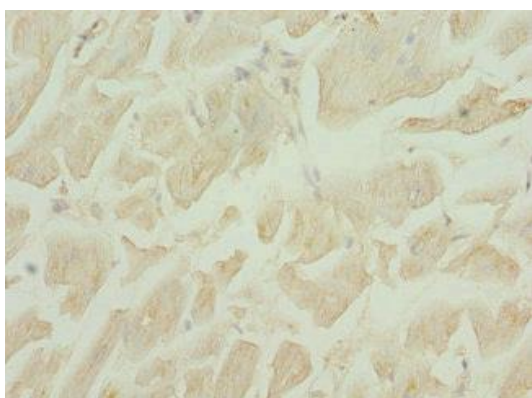
---



Immunohistochemistry of paraffin-embedded human bladder cancer using PACO44803 at dilution of 1:100.



Immunofluorescent analysis of MCF-7 cells using PACO44803 at dilution of 1:100 and Alexa Fluor 488-conjugated AffiniPure Goat Anti-Rabbit IgG(H+L).



Immunohistochemistry of paraffin-embedded human heart tissue using PACO44803 at dilution of 1:100.