

DRAM2 Antibody



PACO44804

Product Information

Size:

50ul

Reactivity:

Human, Mouse

Source:

Rabbit

Isotype:

IgG

Applications:

ELISA, WB, IHC, IF

Recommended dilutions:

ELISA:1:2000-1:10000, WB:1:1000-1:5000,
IHC:1:20-1:200, IF:1:50-1:200

Protein Background:

Plays a role in the initiation of autophagy. In the retina, might be involved in the process of photoreceptor cells renewal and recycling to preserve visual function. Induces apoptotic cell death when coexpressed with DRAM1.

Gene ID:

DRAM2

Uniprot

Q6UX65

Synonyms:

DNA damage-regulated autophagy modulator protein 2 (Transmembrane protein 77),
DRAM2, TMEM77

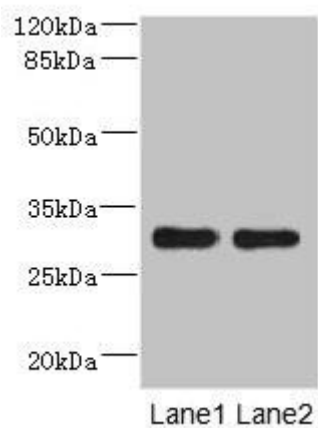
Immunogen:

Recombinant Human DNA damage-regulated autophagy modulator protein 2 protein
(182-266AA).

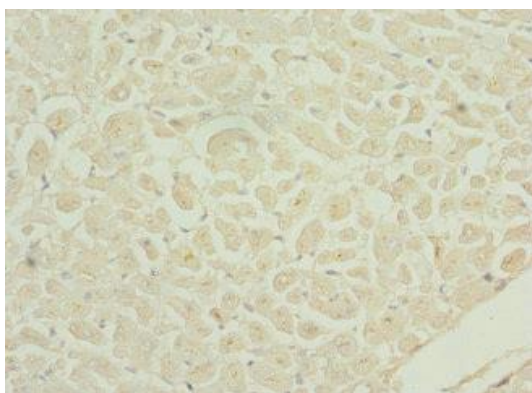
Storage:

PBS with 0.02% sodium azide, 50% glycerol, pH7.3.

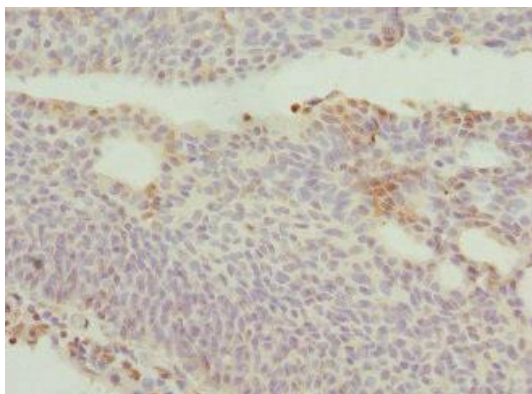
Product Images



Western blot. All lanes: DRAM2 antibody at 3.84 μ g/ml. Lane 1: Mouse heart tissue. Lane 2: Mouse liver tissue. Secondary. Goat polyclonal to rabbit IgG at 1/10000 dilution. Predicted band size: 30 kDa. Observed band size: 30 kDa.



Immunohistochemistry of paraffin-embedded human heart tissue using PACO44804 at dilution of 1:100.



Immunohistochemistry of paraffin-embedded human bladder cancer using PACO44804 at dilution of 1:100.