

---

## Product Information

**Size:**

50ul

**Reactivity:**

Human, Mouse

**Source:**

Rabbit

**Isotype:**

IgG

**Applications:**

ELISA, WB, IHC

**Recommended dilutions:**

ELISA:1:2000-1:10000, WB:1:500-1:5000,  
IHC:1:20-1:200

**Protein Background:**

Involved in the control of early morphogenesis and patterning of both axial midline structures and the development of neural plate. Plays a role in the regulation of planar cell polarity, particularly in the orientation of stereociliary bundles in the cochlea. Required for polarization and movement of myocardializing cells in the outflow tract and seems to act via RHOA signaling to regulate this process. Required for cell surface localization of FZD3 and FZD6 in the inner ear.

**Gene ID:**

VANGL2

**Uniprot**

Q9ULK5

**Synonyms:**

Vang-like protein 2 (Loop-tail protein 1 homolog) (Strabismus 1) (Van Gogh-like protein 2), VANGL2, KIAA1215 STB1

**Immunogen:**

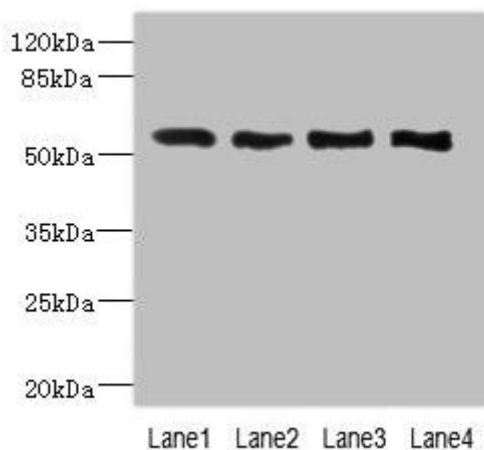
Recombinant Human Vang-like protein 2 protein (1-110AA).

**Storage:**

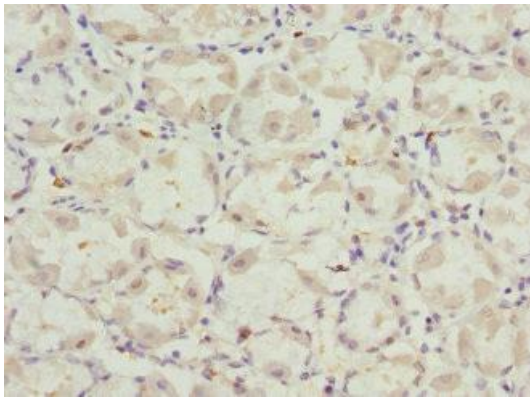
PBS with 0.02% sodium azide, 50% glycerol, pH7.3.

## Product Images

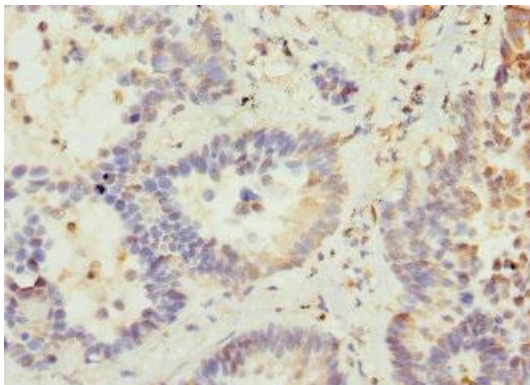
---



Western blot. All lanes: VANGL2 antibody at 2.26 $\mu$ g/ml. Lane 1: HepG2 whole cell lysate. Lane 2: MCF-7 whole cell lysate. Lane 3: Hela whole cell lysate. Lane 4: NIH/3T3 whole cell lysate. Secondary: Goat polyclonal to rabbit IgG at 1/10000 dilution. Predicted band size: 60 kDa. Observed band size: 60 kDa.



Immunohistochemistry of paraffin-embedded human gastric cancer using PACO44812 at dilution of 1:100.



Immunohistochemistry of paraffin-embedded human lung cancer using PACO44812 at dilution of 1:100.