

---

## Product Information

**Size:**

50ul

**Reactivity:**

Human

**Source:**

Rabbit

**Isotype:**

IgG

**Applications:**

ELISA, IHC

**Recommended dilutions:**

ELISA:1:2000-1:10000, IHC:1:20-1:200

**Protein Background:**

Involved in the control of early morphogenesis and patterning of both axial midline structures and the development of neural plate. Plays a role in the regulation of planar cell polarity, particularly in the orientation of stereociliary bundles in the cochlea. Required for polarization and movement of myocardializing cells in the outflow tract and seems to act via RHOA signaling to regulate this process. Required for cell surface localization of FZD3 and FZD6 in the inner ear.

**Gene ID:**

VANGL2

**Uniprot**

Q9ULK5

**Synonyms:**

Vang-like protein 2 (Loop-tail protein 1 homolog) (Strabismus 1) (Van Gogh-like protein 2), VANGL2, KIAA1215 STB1

**Immunogen:**

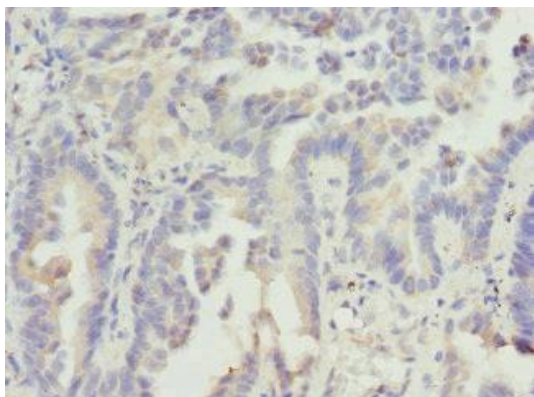
Recombinant Human Vang-like protein 2 protein (1-110AA).

**Storage:**

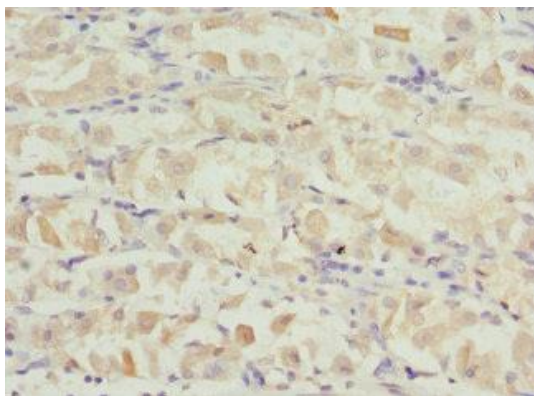
PBS with 0.02% sodium azide, 50% glycerol, pH7.3.

## Product Images

---



Immunohistochemistry of paraffin-embedded human lung cancer using PACO44813 at dilution of 1:100.



Immunohistochemistry of paraffin-embedded human gastric cancer using PACO44813 at dilution of 1:100.