

# IFRD1 Antibody



PACO44832

---

## Product Information

**Size:**

50ul

**Reactivity:**

Human, Mouse

**Source:**

Rabbit

**Isotype:**

IgG

**Applications:**

ELISA, WB, IHC

**Recommended dilutions:**

ELISA:1:2000-1:10000, WB:1:1000-1:5000,  
IHC:1:20-1:200

**Protein Background:**

Could play a role in regulating gene activity in the proliferative and/or differentiative pathways induced by NGF. May be an autocrine factor that attenuates or amplifies the initial ligand-induced signal.

**Gene ID:**

IFRD1

**Uniprot**

O00458

**Synonyms:**

Interferon-related developmental regulator 1 (Nerve growth factor-inducible protein PC4), IFRD1

**Immunogen:**

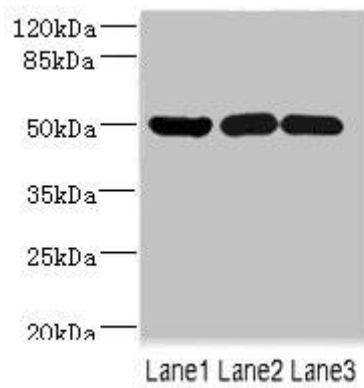
Recombinant Human Interferon-related developmental regulator 1 protein (1-240AA).

**Storage:**

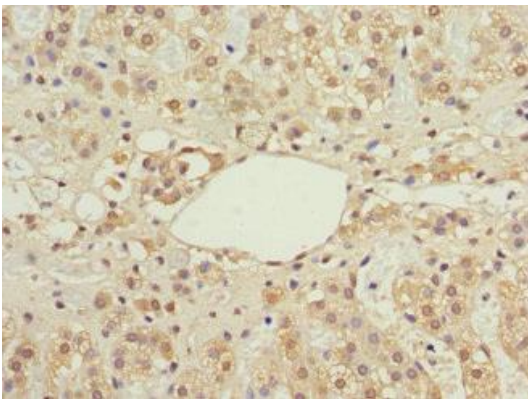
PBS with 0.02% sodium azide, 50% glycerol, pH7.3.

## Product Images

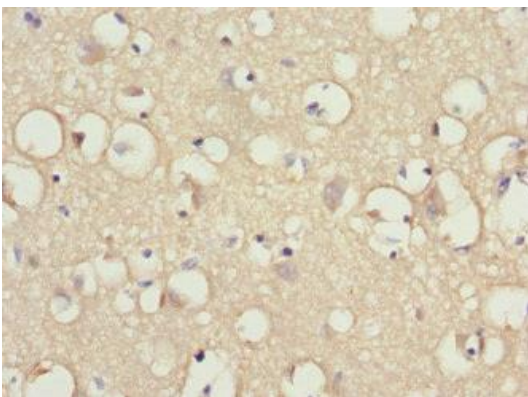
---



Western blot. All lanes: IFRD1 antibody at 1.76 $\mu$ g/ml. Lane 1: Mouse skeletal muscle tissue. Lane 2: HeLa whole cell lysate. Lane 3: Jurkat whole cell lysate. Secondary: Goat polyclonal to rabbit IgG at 1/10000 dilution. Predicted band size: 51, 46 kDa. Observed band size: 51 kDa.



Immunohistochemistry of paraffin-embedded human adrenal gland tissue using PACO44832 at dilution of 1:100.



Immunohistochemistry of paraffin-embedded human brain tissue using PACO44832 at dilution of 1:100.