

## Product Information

**Size:**

50ul

**Reactivity:**

Human, Mouse

**Source:**

Rabbit

**Isotype:**

IgG

**Applications:**

ELISA, WB, IHC

**Recommended dilutions:**

ELISA:1:2000-1:10000, WB:1:1000-1:5000,  
IHC:1:20-1:200

**Protein Background:**

Involved in lineage commitment of primary hemopoietic progenitors by restricting erythroid formation and enhancing myeloid formation. Interferes with erythropoietin-induced erythroid terminal differentiation by preventing cells from exiting the cell cycle through suppression of CDKN1B/p27Kip1 levels. Suppresses RFD2/COP1 activity via CSN3 which activates p53 and induces cell cycle arrest. Binds DNA and affects the expression of a number of genes so may function as a transcription factor in the nucleus.

**Gene ID:**

MLF1

**Uniprot**

P58340

**Synonyms:**

Myeloid leukemia factor 1 (Myelodysplasia-myeloid leukemia factor 1), MLF1

**Immunogen:**

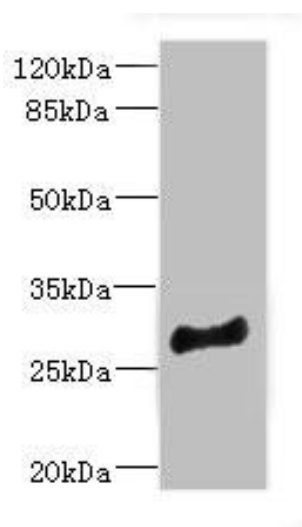
Recombinant Human Myeloid leukemia factor 1 protein (1-268AA).

**Storage:**

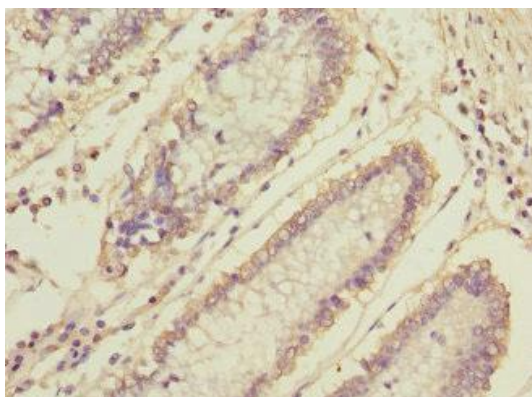
PBS with 0.02% sodium azide, 50% glycerol, pH7.3.

## Product Images

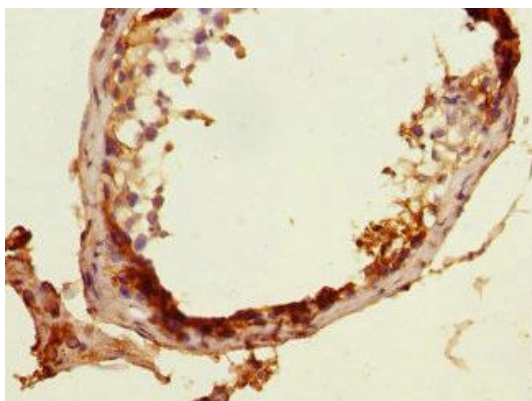
---



Western blot. All lanes: MLF1 antibody at 4.05 $\mu$ g/ml + Mouse brain tissue. Secondary. Goat polyclonal to rabbit IgG at 1/10000 dilution. Predicted band size: 31, 24, 34, 28, 30 kDa. Observed band size: 31 kDa.



Immunohistochemistry of paraffin-embedded human colon cancer using PACO44836 at dilution of 1:100.



Immunohistochemistry of paraffin-embedded human testis tissue using PACO44836 at dilution of 1:100.