

Product Information

Size:

50ul

Reactivity:

Human, Mouse

Source:

Rabbit

Isotype:

IgG

Applications:

ELISA, WB, IHC

Recommended dilutions:

ELISA:1:2000-1:10000, WB:1:1000-1:5000,
IHC:1:20-1:200

Protein Background:

Essential subunit of the N-oligosaccharyl transferase (OST) complex which catalyzes the transfer of a high mannose oligosaccharide from a lipid-linked oligosaccharide donor to an asparagine residue within an Asn-X-Ser/Thr consensus motif in nascent polypeptide chains.

Gene ID:

RPN2

Uniprot

P04844

Synonyms:

Dolichyl-diphosphooligosaccharide--protein glycosyltransferase subunit 2 (Dolichyl-diphosphooligosaccharide--protein glycosyltransferase 63 kDa subunit) (RIBIIR) (Ribophorin II) (RPN-II) (Ribophorin-2), RPN2

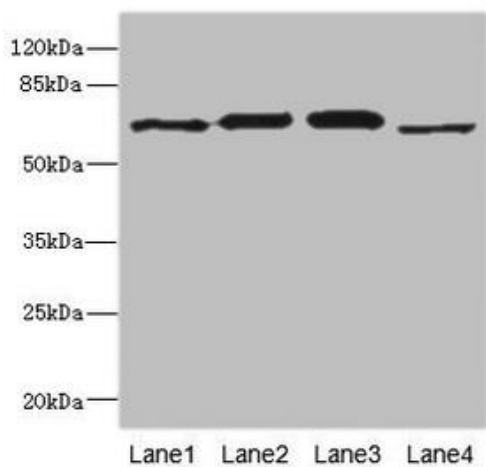
Immunogen:

Recombinant Human Dolichyl-diphosphooligosaccharide--protein glycosyltransferase subunit 2 protein (360-540AA).

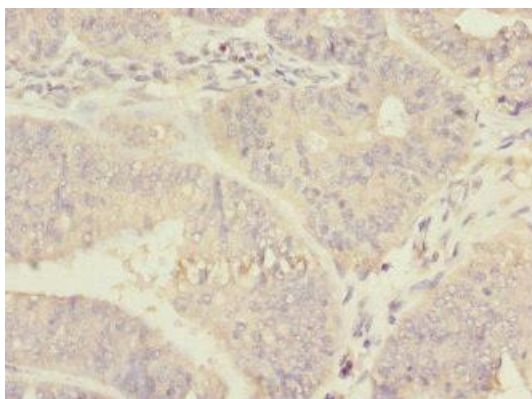
Storage:

PBS with 0.02% sodium azide, 50% glycerol, pH7.3.

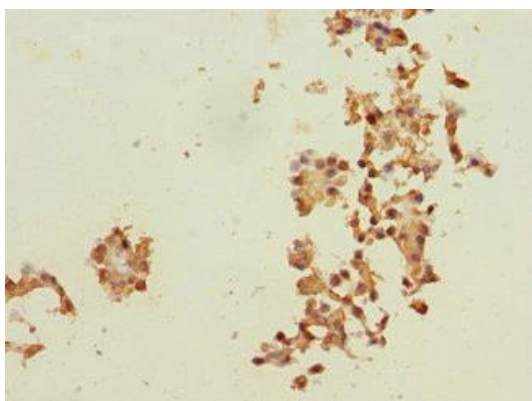
Product Images



Western blot. All lanes: RPN2 antibody at 1.91 μ g/ml. Lane 1: NIH/3T3 whole cell lysate. Lane 2: 293T whole cell lysate. Lane 3: Hela whole cell lysate. Lane 4: Human placenta tissue. Secondary. Goat polyclonal to rabbit IgG at 1/10000 dilution. Predicted band size: 70, 68 kDa. Observed band size: 70 kDa.



Immunohistochemistry of paraffin-embedded human endometrial cancer using PACO44848 at dilution of 1:100.



Immunohistochemistry of paraffin-embedded human breast cancer using PACO44848 at dilution of 1:100.