

SLC22A11 Antibody



PACO44850

Product Information

Size:

50ul

Reactivity:

Human

Source:

Rabbit

Isotype:

IgG

Applications:

ELISA, IHC

Recommended dilutions:

ELISA:1:2000-1:10000, IHC:1:20-1:200

Protein Background:

Mediates saturable uptake of estrone sulfate, dehydroepiandrosterone sulfate and related compounds.

Gene ID:

SLC22A11

Uniprot

Q9NSA0

Synonyms:

Solute carrier family 22 member 11 (Organic anion transporter 4), SLC22A11, OAT4

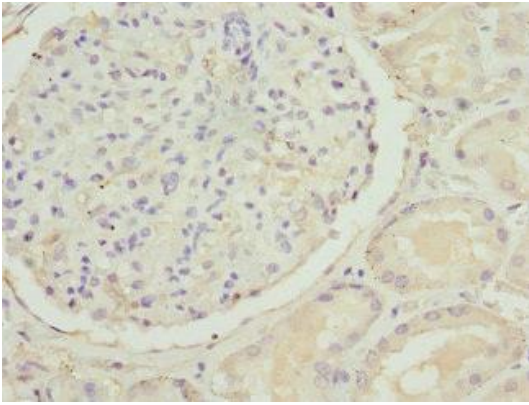
Immunogen:

Recombinant Human Solute carrier family 22 member 11 protein (40-150AA).

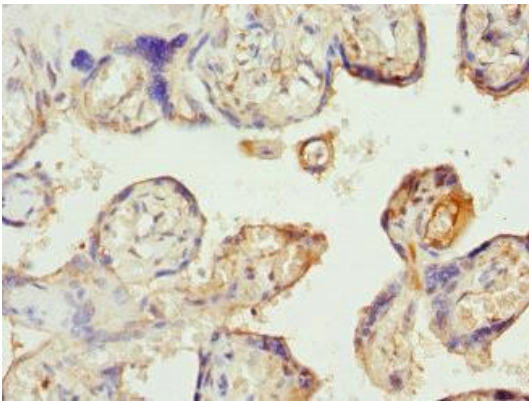
Storage:

PBS with 0.02% sodium azide, 50% glycerol, pH7.3.

Product Images



Immunohistochemistry of paraffin-embedded human kidney tissue using PACO44850 at dilution of 1:100.



Immunohistochemistry of paraffin-embedded human placenta tissue using PACO44850 at dilution of 1:100.