

CHN1 Antibody



PACO44866

Product Information

Size:

50ul

Reactivity:

Human

Source:

Rabbit

Isotype:

IgG

Applications:

ELISA, WB, IHC

Recommended dilutions:

ELISA:1:2000-1:10000, WB:1:1000-1:5000,
IHC:1:20-1:200

Protein Background:

GTPase-activating protein for p21-rac and a phorbol ester receptor. Involved in the assembly of neuronal locomotor circuits as a direct effector of EPHA4 in axon guidance.

Gene ID:

CHN1

Uniprot

P15882

Synonyms:

N-chimaerin (A-chimaerin) (Alpha-chimerin) (N-chimerin) (NC) (Rho GTPase-activating protein 2), CHN1, ARHGAP2 CHN

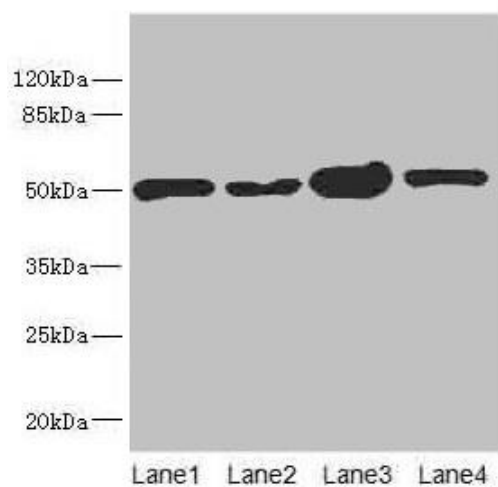
Immunogen:

Recombinant Human N-chimaerin protein (1-200AA).

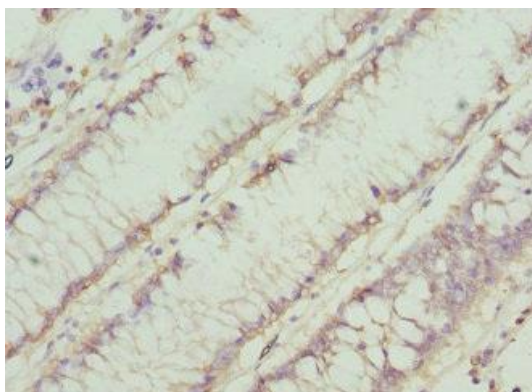
Storage:

PBS with 0.02% sodium azide, 50% glycerol, pH7.3.

Product Images



Western blot. All lanes: CHN1 antibody at 6.08 μ g/ml. Lane 1: 293T whole cell lysate. Lane 2: MCF-7 whole cell lysate. Lane 3: Jurkat whole cell lysate. Lane 4: Hela whole cell lysate. Secondary. Goat polyclonal to rabbit IgG at 1/10000 dilution. Predicted band size: 54, 39, 51 kDa. Observed band size: 51 kDa.



Immunohistochemistry of paraffin-embedded human colon cancer using PACO44866 at dilution of 1:100.