

PACO44870

Product Information

Size:

50ul

Reactivity:

Human

Source:

Rabbit

Isotype:

IgG

Applications:

ELISA, WB, IHC

Recommended dilutions:

ELISA:1:2000-1:10000, WB:1:1000-1:5000,
IHC:1:20-1:200

Protein Background:

Necessary for centrosome duplication at different stages of procentriole formation. Acts as a key negative regulator of ciliogenesis in collaboration with CEP97 by capping the mother centriole thereby preventing cilia formation. Also involved in promoting ciliogenesis. May play a role in the assembly of the mother centriole subdistal appendages (SDA) thereby effecting the fusion of recycling endosomes to basal bodies during cilia formation. Required for correct spindle formation and has a role in regulating cytokinesis and genome stability via cooperation with CALM1 and CETN2.

Gene ID:

CCP110

Uniprot

O43303

Synonyms:

Centriolar coiled-coil protein of 110 kDa (Centrosomal protein of 110 kDa) (CP110) (Cep110), CCP110, CEP110 CP110 KIAA0419

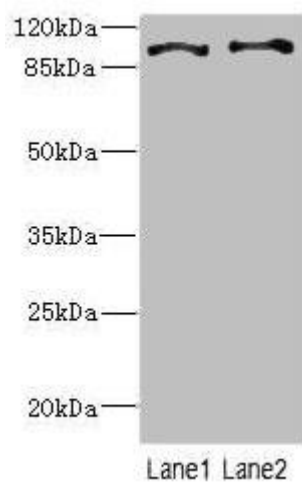
Immunogen:

Recombinant Human Centriolar coiled-coil protein of 110 kDa protein (1-280AA).

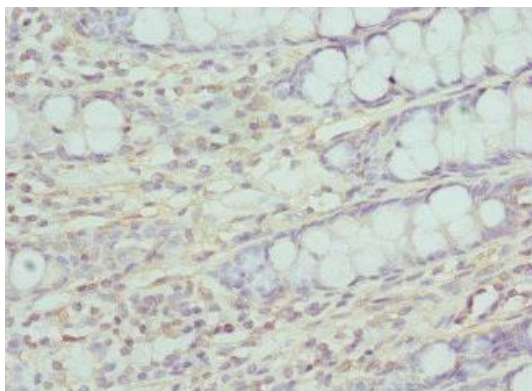
Storage:

PBS with 0.02% sodium azide, 50% glycerol, pH7.3.

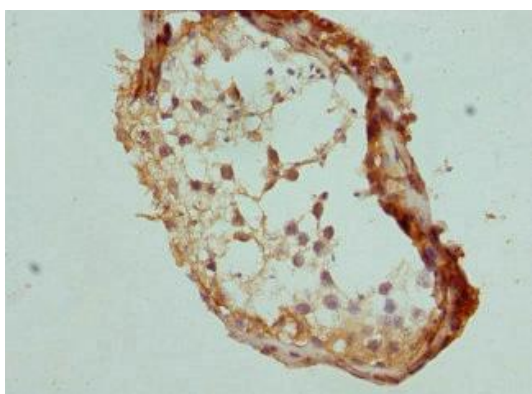
Product Images



Western blot. All lanes: CCP110 antibody at 4.6 μ g/ml. Lane 1: HeLa whole cell lysate. Lane 2: 293T whole cell lysate. Secondary. Goat polyclonal to rabbit IgG at 1/10000 dilution. Predicted band size: 114, 112 kDa. Observed band size: 114 kDa.



Immunohistochemistry of paraffin-embedded human colon tissue using PACO44870 at dilution of 1:100.



Immunohistochemistry of paraffin-embedded human testis tissue using PACO44870 at dilution of 1:100.