

PEA15 Antibody



PACO44886

Product Information

Size:

50ul

Reactivity:

Human, Mouse

Source:

Rabbit

Isotype:

IgG

Applications:

ELISA, WB, IHC, IF

Recommended dilutions:

ELISA:1:2000-1:10000, WB:1:500-1:2000,
IHC:1:20-1:200, IF:1:50-1:200

Protein Background:

Blocks Ras-mediated inhibition of integrin activation and modulates the ERK MAP kinase cascade. Inhibits RPS6KA3 activities by retaining it in the cytoplasm. Inhibits both TNFRSF6- and TNFRSF1A-mediated CASP8 activity and apoptosis. Regulates glucose transport by controlling both the content of SLC2A1 glucose transporters on the plasma membrane and the insulin-dependent trafficking of SLC2A4 from the cell interior to the surface.

Gene ID:

PEA15

Uniprot

Q15121

Synonyms:

Astrocytic phosphoprotein PEA-15 (15 kDa phosphoprotein enriched in astrocytes) (Phosphoprotein enriched in diabetes) (PED), PEA15

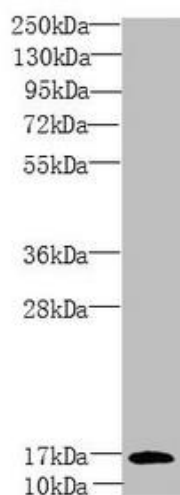
Immunogen:

Recombinant Human Astrocytic phosphoprotein PEA-15 protein (1-130AA).

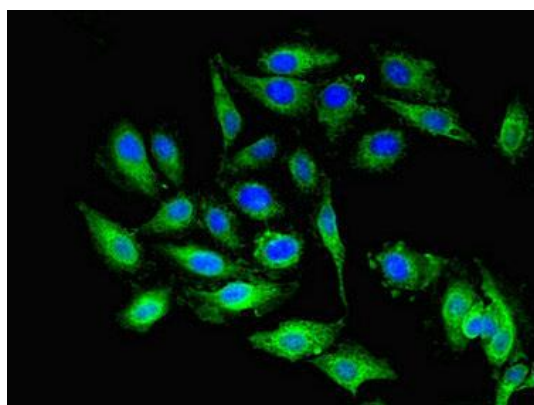
Storage:

PBS with 0.02% sodium azide, 50% glycerol, pH7.3.

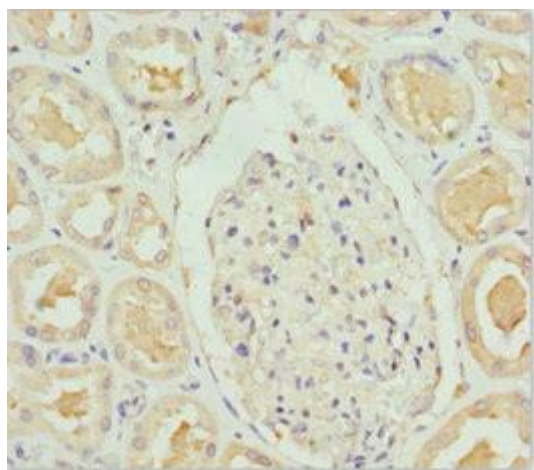
Product Images



Western blot. All lanes: PEA15 antibody at 1.81 μ g/ml + Mouse brain tissue. Secondary. Goat polyclonal to rabbit IgG at 1/10000 dilution. Predicted band size: 16, 18 kDa. Observed band size: 16 kDa.



Immunofluorescent analysis of HeLa cells using PACO44886 at dilution of 1:100 and Alexa Fluor 488-conjugated AffiniPure Goat Anti-Rabbit IgG(H+L).



Immunohistochemistry of paraffin-embedded human kidney tissue using PACO44886 at dilution of 1:100.