

# LCN6 Antibody



PACO44890

---

## Product Information

**Size:**

50ul

**Reactivity:**

Human

**Source:**

Rabbit

**Isotype:**

IgG

**Applications:**

ELISA, IHC

**Recommended dilutions:**

ELISA:1:2000-1:10000, IHC:1:20-1:200

**Protein Background:**

May play a role in male fertility.

**Gene ID:**

LCN6

**Uniprot**

P62502

**Synonyms:**

Epididymal-specific lipocalin-6 (Lipocalin-5), LCN6, LCN5

**Immunogen:**

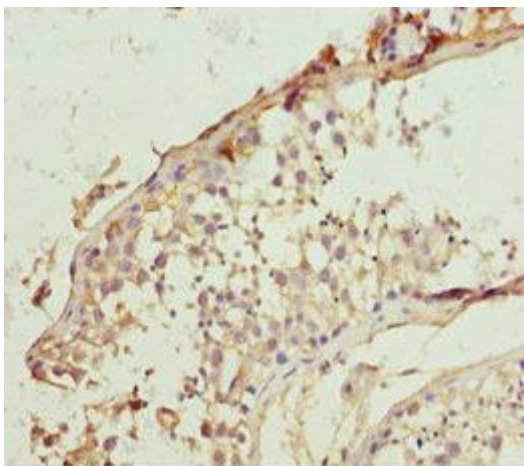
Recombinant Human Epididymal-specific lipocalin-6 protein (21-163AA).

**Storage:**

PBS with 0.02% sodium azide, 50% glycerol, pH7.3.

## Product Images

---



Immunohistochemistry of paraffin-embedded human testis tissue using PACO44890 at dilution of 1:100.