

PACO44914

Product Information

Size:

50ul

Reactivity:

Human

Source:

Rabbit

Isotype:

IgG

Applications:

ELISA, IHC

Recommended dilutions:

ELISA:1:2000-1:10000, IHC:1:20-1:200

Protein Background:

May be involved in actively transporting phosphate into cells via Na(+) cotransport in the renal brush border membrane. Probably mediates 70-80% of the apical influx.

Gene ID:

SLC34A1

Uniprot

Q06495

Synonyms:

Sodium-dependent phosphate transport protein 2A (Sodium-phosphate transport protein 2A) (Na(+)-dependent phosphate cotransporter 2A) (NaPi-3) (Sodium/phosphate cotransporter 2A) (Na(+)/Pi cotransporter 2A) (NaPi-2a) (Solute carrier family 34 member 1), SLC34A1, NPT2 SLC17A2

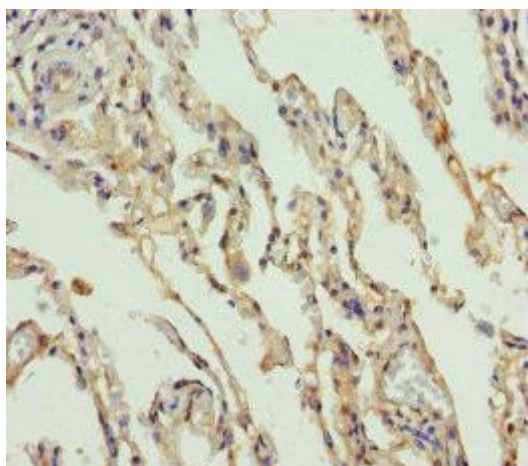
Immunogen:

Recombinant Human Sodium-dependent phosphate transport protein 2A protein (1-103AA).

Storage:

PBS with 0.02% sodium azide, 50% glycerol, pH7.3.

Product Images



Immunohistochemistry of paraffin-embedded human lung tissue using PACO44914 at dilution of 1:100.