

Product Information

Size:

50ul

Reactivity:

Human

Source:

Rabbit

Isotype:

IgG

Applications:

ELISA, WB, IHC, IF

Recommended dilutions:

ELISA:1:2000-1:10000, WB:1:500-1:2000,
IHC:1:20-1:200, IF:1:50-1:200

Protein Background:

Inhibitor subunit of the major nuclear protein phosphatase-1 (PP-1). It has RNA-binding activity but does not cleave RNA and may target PP-1 to RNA-associated substrates. May also be involved in pre-mRNA splicing. Binds DNA and might act as a transcriptional repressor. Seems to be required for cell proliferation.

Gene ID:

PPP1R8

Uniprot

Q12972

Synonyms:

Nuclear inhibitor of protein phosphatase 1 (NIPP-1) (Protein phosphatase 1 regulatory inhibitor subunit 8) [Includes: Activator of RNA decay (EC 3.1.4. -) (ARD-1)], PPP1R8, ARD1 NIPP1

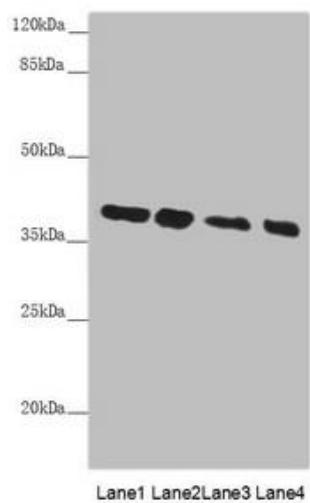
Immunogen:

Recombinant Human Nuclear inhibitor of protein phosphatase 1 protein (1-209AA).

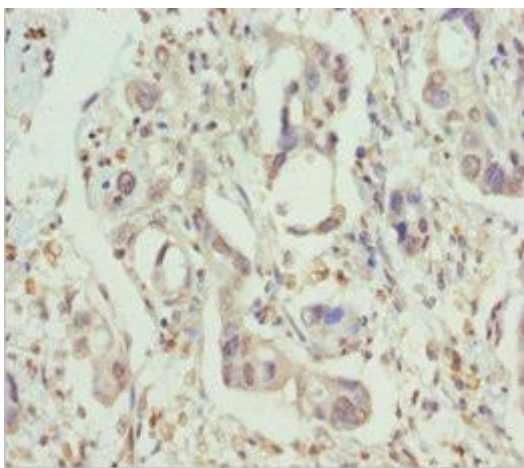
Storage:

PBS with 0.02% sodium azide, 50% glycerol, pH7.3.

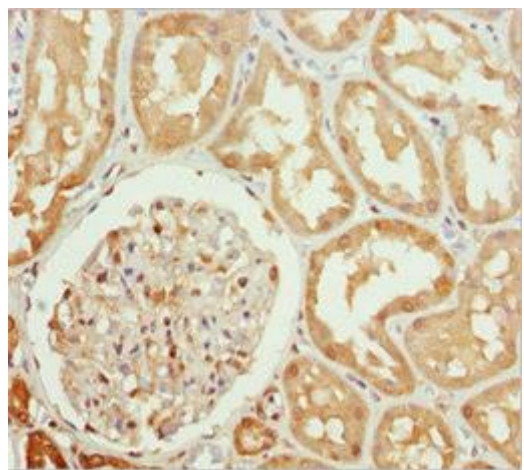
Product Images



Western blot. All lanes: PPP1R8 antibody at 4.73 μ g/ml. Lane 1: PC-3 whole cell lysate. Lane 2: HL60 whole cell lysate. Lane 3: HepG2 whole cell lysate. Lane 4: Hela whole cell lysate. Secondary: Goat polyclonal to rabbit IgG at 1/10000 dilution. Predicted band size: 39, 23, 14 kDa. Observed band size: 39 kDa.



Immunohistochemistry of paraffin-embedded human pancreatic cancer using PACO44921 at dilution of 1:100.



Immunohistochemistry of paraffin-embedded human kidney tissue using PACO44921 at dilution of 1:100.