

KRT6A Antibody



PACO44945

Product Information

Size:

50ul

Reactivity:

Human, Mouse

Source:

Rabbit

Isotype:

IgG

Applications:

ELISA, WB, IHC

Recommended dilutions:

ELISA:1:2000-1:10000, WB:1:1000-1:5000,
IHC:1:20-1:200

Protein Background:

Epidermis-specific type I keratin involved in wound healing. Involved in the activation of follicular keratinocytes after wounding, while it does not play a major role in keratinocyte proliferation or migration. Participates in the regulation of epithelial migration by inhibiting the activity of SRC during wound repair.

Gene ID:

KRT6A

Uniprot

P02538

Synonyms:

Keratin, type II cytoskeletal 6A (Cytokeratin-6A) (CK-6A) (Cytokeratin-6D) (CK-6D) (Keratin-6A) (K6A) (Type-II keratin Kb6) (allergen Hom s 5), KRT6A, K6A KRT6D

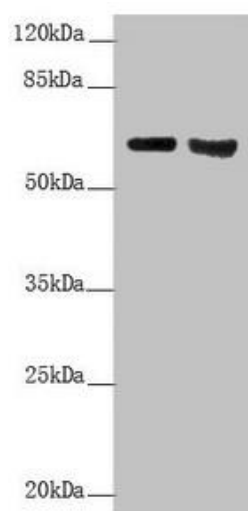
Immunogen:

Recombinant Human Keratin, type II cytoskeletal 6A protein (305-564AA).

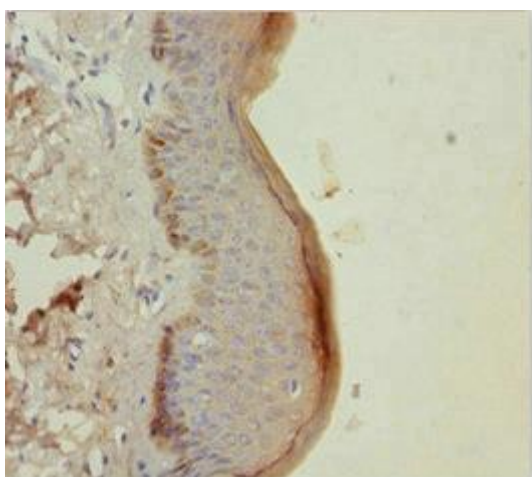
Storage:

PBS with 0.02% sodium azide, 50% glycerol, pH7.3.

Product Images



Western blot. All lanes: KRT6A antibody at 5.82 $\mu\text{g/ml}$. Lane 1: Mouse lung tissue. Lane 2: A431 whole cell lysate. Secondary. Goat polyclonal to rabbit IgG at 1/10000 dilution. Predicted band size: 60 kDa. Observed band size: 60 kDa.



Immunohistochemistry of paraffin-embedded human skin tissue using PACO44945 at dilution of 1:100.