

KRT6B Antibody



PACO44946

Product Information

Size:

50ul

Reactivity:

Human

Source:

Rabbit

Isotype:

IgG

Applications:

ELISA, WB

Recommended dilutions:

ELISA:1:2000-1:10000, WB:1:1000-1:5000

Protein Background:

extracellular exosome, structural constituent of cytoskeleton, ectoderm development.

Gene ID:

KRT6B

Uniprot

P04259

Synonyms:

Keratin, type II cytoskeletal 6B (Cytokeratin-6B) (CK-6B) (Keratin-6B) (K6B) (Type-II keratin Kb10), KRT6B, K6B KRTL1

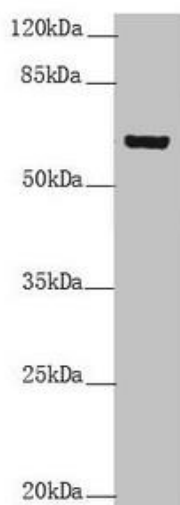
Immunogen:

Recombinant Human Keratin, type II cytoskeletal 6B protein (1-280AA).

Storage:

PBS with 0.02% sodium azide, 50% glycerol, pH7.3.

Product Images



Western blot. All lanes: KRT6B antibody at 5.39 μ g/ml + A431 whole cell lysate. Secondary. Goat polyclonal to rabbit IgG at 1/10000 dilution. Predicted band size: 60 kDa. Observed band size: 60 kDa.