

# L2HGDH Antibody



PACO44948

---

## Product Information

**Size:**

50ul

**Reactivity:**

Human

**Source:**

Rabbit

**Isotype:**

IgG

**Applications:**

ELISA, IHC

**Recommended dilutions:**

ELISA:1:2000-1:10000, IHC:1:20-1:200

**Protein Background:**

integral component of membrane, integral component of mitochondrial inner membrane, mitochondrial inner membrane, mitochondrion, 2-hydroxyglutarate dehydrogenase activity, 2-oxoglutarate metabolic process, cellular protein metabolic process.

**Gene ID:**

L2HGDH

**Uniprot**

Q9H9P8

**Synonyms:**

L-2-hydroxyglutarate dehydrogenase, mitochondrial (EC 1.1.99.2) (Duranin), L2HGDH, C14orf160

**Immunogen:**

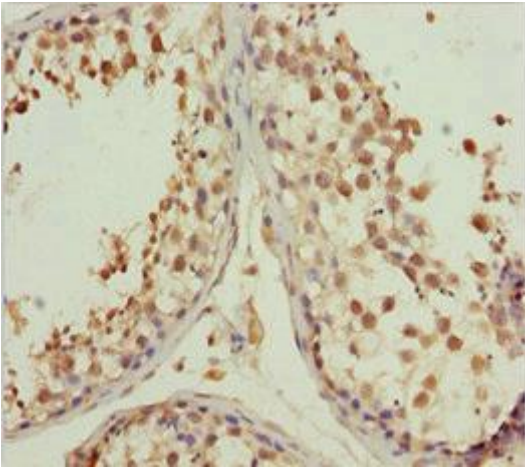
Recombinant Human L-2-hydroxyglutarate dehydrogenase, mitochondrial protein (1-220AA).

**Storage:**

PBS with 0.02% sodium azide, 50% glycerol, pH7.3.

## Product Images

---



Immunohistochemistry of paraffin-embedded human testis tissue using PACO44948 at dilution of 1:100.