

# LARS2 Antibody



PACO44950

---

## Product Information

**Size:**

50ul

**Reactivity:**

Human

**Source:**

Rabbit

**Isotype:**

IgG

**Applications:**

ELISA, IHC

**Recommended dilutions:**

ELISA:1:2000-1:10000, IHC:1:20-1:200

**Protein Background:**

mitochondrial matrix, mitochondrion, leucine-tRNA ligase activity, leucyl-tRNA aminoacylation, tRNA aminoacylation for protein translation.

**Gene ID:**

LARS2

**Uniprot**

Q15031

**Synonyms:**

Probable leucine--tRNA ligase, mitochondrial (EC 6.1.1.4) (Leucyl-tRNA synthetase) (LeuRS), LARS2, KIAA0028

**Immunogen:**

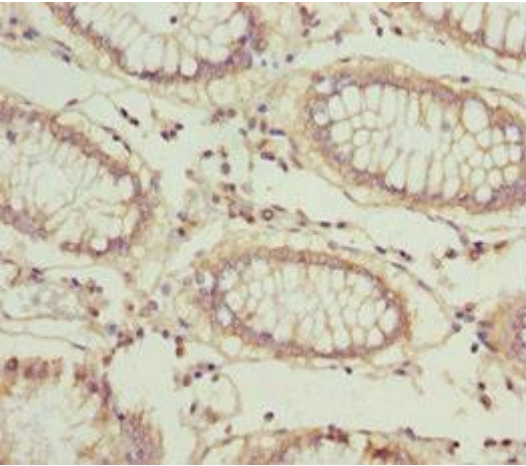
Recombinant Human Probable leucine--tRNA ligase, mitochondrial protein (1-250AA).

**Storage:**

PBS with 0.02% sodium azide, 50% glycerol, pH7.3.

## Product Images

---



Immunohistochemistry of paraffin-embedded human colon cancer using PACO44950 at dilution of 1:100.