

PSTPIP1 Antibody



PACO44968

Product Information

Size:

50ul

Reactivity:

Human

Source:

Rabbit

Isotype:

IgG

Applications:

ELISA, WB

Recommended dilutions:

ELISA:1:2000-1:10000, WB:1:1000-1:5000

Protein Background:**Gene ID:**

PSTPIP1

Uniprot

O43586

Synonyms:

Proline-serine-threonine phosphatase-interacting protein 1 (PEST phosphatase-interacting protein 1) (CD2-binding protein 1) (H-PIP), PSTPIP1, CD2BP1

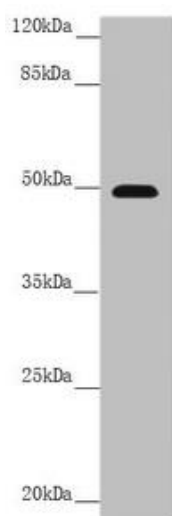
Immunogen:

Recombinant Human Proline-serine-threonine phosphatase-interacting protein 1 protein (157-416AA).

Storage:

PBS with 0.02% sodium azide, 50% glycerol, pH7.3.

Product Images



Western blot. All lanes: PSTPIP1 antibody at 3.99 $\mu\text{g/ml}$ + Raw264.7 whole cell lysate. Secondary. Goat polyclonal to rabbit IgG at 1/10000 dilution. Predicted band size: 48, 46 kDa. Observed band size: 48 kDa.