

REEP1 Antibody



PACO44972

Product Information

Size:

50ul

Reactivity:

Human, Mouse

Source:

Rabbit

Isotype:

IgG

Applications:

ELISA, WB, IHC

Recommended dilutions:

ELISA:1:2000-1:10000, WB:1:1000-1:5000,
IHC:1:20-1:200

Protein Background:

Required for endoplasmic reticulum (ER) network formation, shaping and remodeling; it links ER tubules to the cytoskeleton. May also enhance the cell surface expression of odorant receptors. May play a role in long-term axonal maintenance.

Gene ID:

REEP1

Uniprot

Q9H902

Synonyms:

Receptor expression-enhancing protein 1 (Spastic paraplegia 31 protein), REEP1, C2orf23 SPG31

Immunogen:

Recombinant Human Receptor expression-enhancing protein 1 protein (101-201AA).

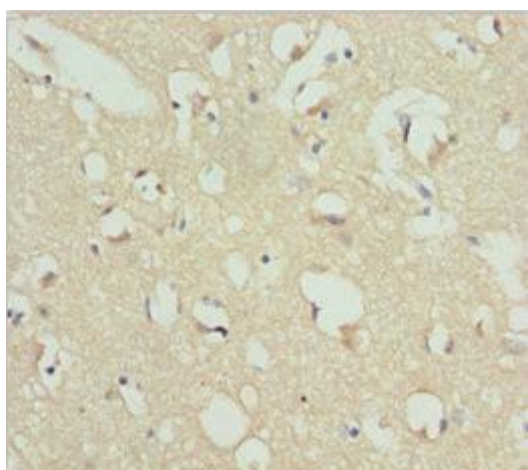
Storage:

PBS with 0.02% sodium azide, 50% glycerol, pH7.3.

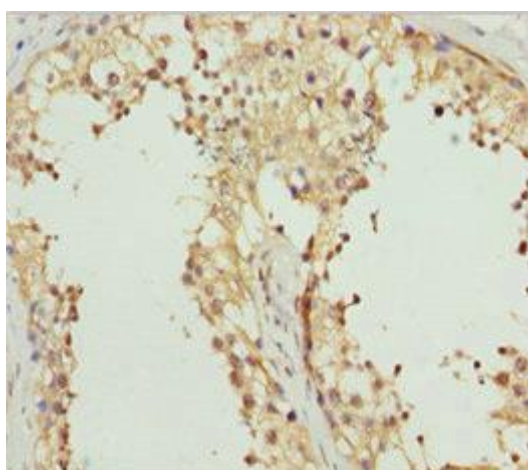
Product Images



Western blot. All lanes: REEP1 antibody at 5.84 $\mu\text{g/ml}$ + Mouse gonadal tissue. Secondary. Goat polyclonal to rabbit IgG at 1/10000 dilution. Predicted band size: 23, 19, 17 kDa. Observed band size: 23, 80 kDa.



Immunohistochemistry of paraffin-embedded human brain tissue using PACO44972 at dilution of 1:100.



Immunohistochemistry of paraffin-embedded human testis tissue using PACO44972 at dilution of 1:100.