

Product Information

Size:

50ul

Reactivity:

Human

Source:

Rabbit

Isotype:

IgG

Applications:

ELISA, WB, IHC

Recommended dilutions:

ELISA:1:2000-1:10000, WB:1:1000-1:5000,
IHC:1:20-1:200

Protein Background:

SNAREs, soluble N-ethylmaleimide-sensitive factor-attachment protein receptors, are essential proteins for fusion of cellular membranes. SNAREs localized on opposing membranes assemble to form a trans-SNARE complex, an extended, parallel four alpha-helical bundle that drives membrane fusion. SNAP29 is a SNARE involved in autophagy through the direct control of autophagosome membrane fusion with the lysosome membrane. Plays also a role in ciliogenesis by regulating membrane fusions.

Gene ID:

SNAP29

Uniprot

O95721

Synonyms:

Synaptosomal-associated protein 29 (SNAP-29) (Soluble 29 kDa NSF attachment protein) (Vesicle-membrane fusion protein SNAP-29), SNAP29

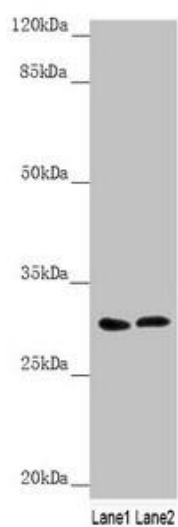
Immunogen:

Recombinant Human Synaptosomal-associated protein 29 protein (1-258AA).

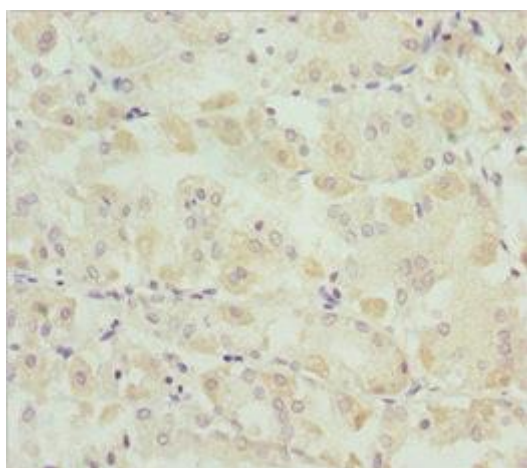
Storage:

PBS with 0.02% sodium azide, 50% glycerol, pH7.3.

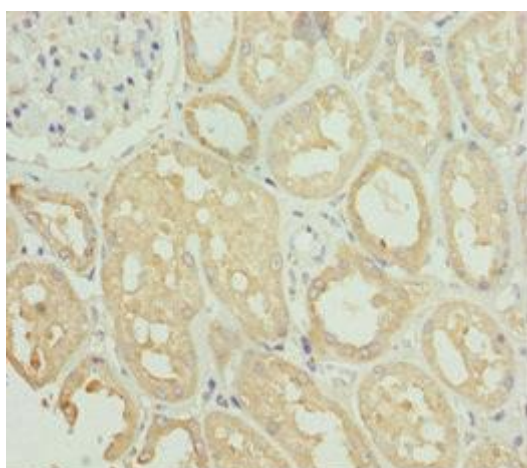
Product Images



Western blot. All lanes: SNAP29 antibody at 1.79 μ g/ml. Lane 1: 293T whole cell lysate. Lane 2: Jurkat whole cell lysate. Secondary. Goat polyclonal to rabbit IgG at 1/10000 dilution. Predicted band size: 29 kDa. Observed band size: 29 kDa.



Immunohistochemistry of paraffin-embedded human gastric cancer using PACO44978 at dilution of 1:100.



Immunohistochemistry of paraffin-embedded human kidney tissue using PACO44978 at dilution of 1:100.