
Product Information

Size:

50ul

Reactivity:

Human, Mouse

Source:

Rabbit

Isotype:

IgG

Applications:

ELISA, WB, IHC

Recommended dilutions:

ELISA:1:2000-1:10000, WB:1:1000-1:5000,
IHC:1:20-1:200

Protein Background:

Inositol 5-phosphatase which acts on inositol 1,4,5-trisphosphate, inositol 1,3,4,5-tetrakisphosphate, phosphatidylinositol 4,5-bisphosphate and phosphatidylinositol 3,4,5-trisphosphate. Has 6-fold higher affinity for phosphatidylinositol 4,5-bisphosphate than for inositol 1,4,5-trisphosphate. May negatively regulate assembly of the actin cytoskeleton.

Gene ID:

INPP5K

Uniprot

Q9BT40

Synonyms:

Inositol polyphosphate 5-phosphatase K (EC 3.1.3.56) (Skeletal muscle and kidney-enriched inositol phosphatase), INPP5K, PPS SKIP

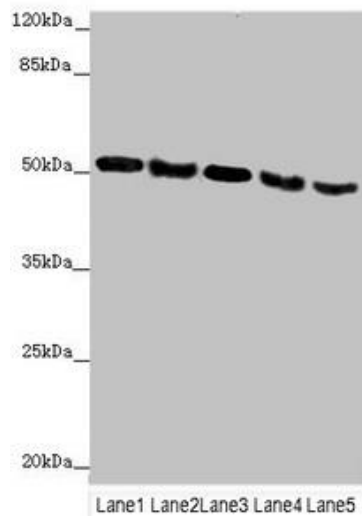
Immunogen:

Recombinant Human Inositol polyphosphate 5-phosphatase K protein (149-448AA).

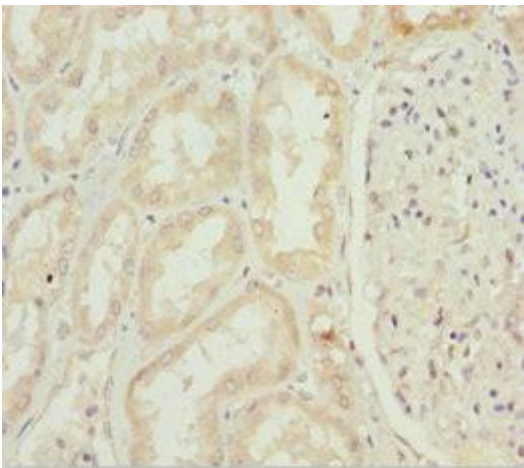
Storage:

PBS with 0.02% sodium azide, 50% glycerol, pH7.3.

Product Images



Western blot. All lanes: INPP5K antibody at 4.43 μ g/ml. Lane 1: Mouse heart tissue. Lane 2: Mouse brain tissue. Lane 3: Mouse skeletal muscle tissue. Lane 4: Hela whole cell lysate. Lane 5: A549 whole cell lysate. Secondary. Goat polyclonal to rabbit IgG at 1/10000 dilution. Predicted band size: 52, 43 kDa. Observed band size: 52 kDa.



Immunohistochemistry of paraffin-embedded human kidney tissue using PACO45008 at dilution of 1:100.