

PACO45052

Product Information

Size:

50ul

Reactivity:

Human, Mouse

Source:

Rabbit

Isotype:

IgG

Applications:

ELISA, WB, IHC

Recommended dilutions:

ELISA:1:2000-1:10000, WB:1:1000-1:5000,
IHC:1:20-1:200

Protein Background:

centrosome, spindle pole.

Gene ID:

CEP95

Uniprot

Q96GE4

Synonyms:

Centrosomal protein of 95 kDa (Cep95) (Coiled-coil domain-containing protein 45),
CEP95, CCDC45 CEP45

Immunogen:

Recombinant Human Centrosomal protein of 95 kDa protein (582-821AA).

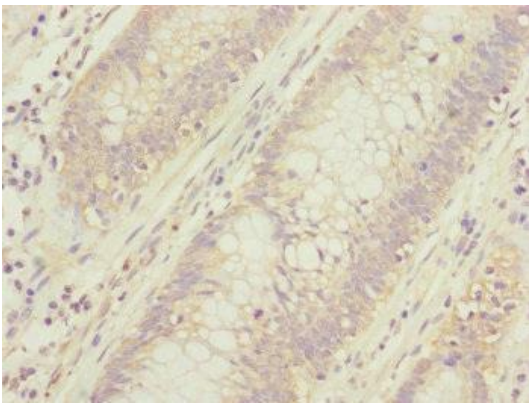
Storage:

PBS with 0.02% sodium azide, 50% glycerol, pH7.3.

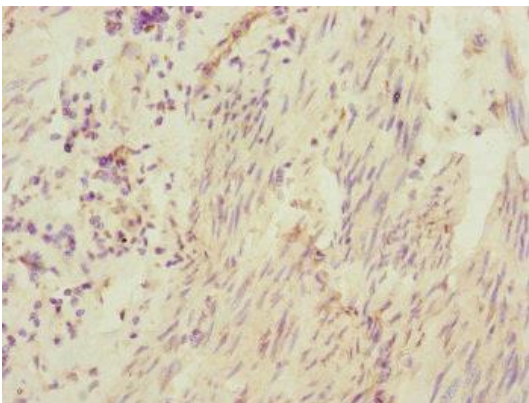
Product Images



Western blot. All lanes: CEP95 antibody at 2.67 $\mu\text{g/ml}$ + Mouse heart tissue. Secondary. Goat polyclonal to rabbit IgG at 1/10000 dilution. Predicted band size: 96, 77 kDa. Observed band size: 96 kDa.



Immunohistochemistry of paraffin-embedded human colon cancer using PACO45052 at dilution of 1:100.



Immunohistochemistry of paraffin-embedded human bladder cancer using PACO45052 at dilution of 1:100.