

CETN1 Antibody



PACO45065

Product Information

Size:

50ul

Reactivity:

Human

Source:

Rabbit

Isotype:

IgG

Applications:

ELISA, IHC

Recommended dilutions:

ELISA:1:2000-1:10000, IHC:1:20-1:200

Protein Background:

Plays a fundamental role in microtubule-organizing center structure and function.

Gene ID:

CETN1

Uniprot

Q12798

Synonyms:

Centrin-1 (Caltractin isoform 2), CETN1, CEN1 CETN

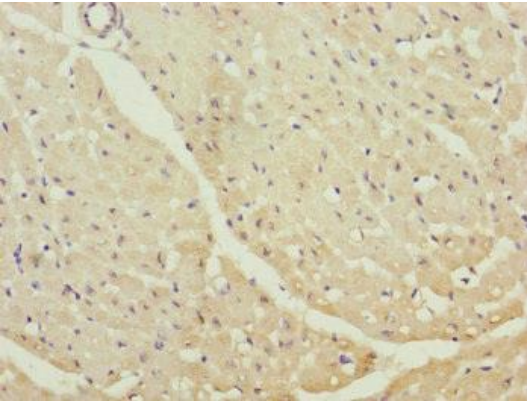
Immunogen:

Recombinant Human Centrin-1 protein (1-172AA).

Storage:

PBS with 0.02% sodium azide, 50% glycerol, pH7.3.

Product Images



Immunohistochemistry of paraffin-embedded human heart tissue using PACO45065 at dilution of 1:100.