

IL36G Antibody



PACO45089

Product Information

Size:

50ul

Reactivity:

Human

Source:

Rabbit

Isotype:

IgG

Applications:

ELISA, IHC

Recommended dilutions:

ELISA:1:2000-1:10000, IHC:1:20-1:200

Protein Background:

Gene ID:

IL36G

Uniprot

Q9NZH8

Synonyms:

Interleukin-36 gamma (IL-1-related protein 2) (IL-1RP2) (Interleukin-1 epsilon) (IL-1 epsilon) (Interleukin-1 family member 9) (IL-1F9) (Interleukin-1 homolog 1) (IL-1H1), IL36G, IL1E IL1F9 IL1H1 IL1RP2

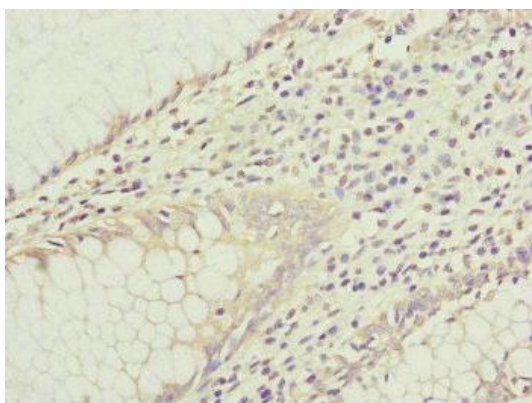
Immunogen:

Recombinant Human Interleukin-36 γ protein (1-169AA).

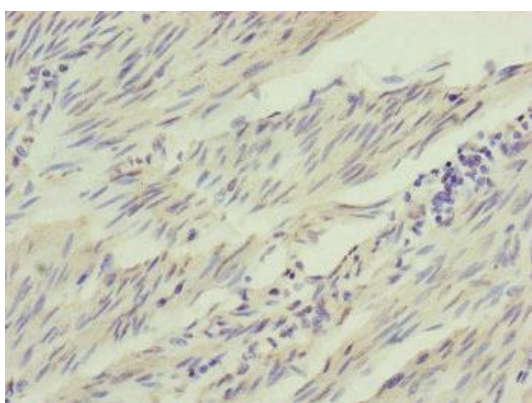
Storage:

PBS with 0.02% sodium azide, 50% glycerol, pH7.3.

Product Images



Immunohistochemistry of paraffin-embedded human colon cancer using PACO45089 at dilution of 1:100.



Immunohistochemistry of paraffin-embedded human bladder cancer using PACO45089 at dilution of 1:100.