

# MRPS22 Antibody



PACO45096

---

## Product Information

**Size:**

50ul

**Reactivity:**

Human, Mouse

**Source:**

Rabbit

**Isotype:**

IgG

**Applications:**

ELISA, WB, IHC

**Recommended dilutions:**

ELISA:1:2000-1:10000, WB:1:1000-1:5000,  
IHC:1:20-1:200

**Protein Background:**

mitochondrial inner membrane, mitochondrial ribosome, mitochondrial small ribosomal subunit, mitochondrion, structural constituent of ribosome, mitochondrial translational elongation, mitochondrial translational termination.

**Gene ID:**

MRPS22

**Uniprot**

P82650

**Synonyms:**

28S ribosomal protein S22, mitochondrial (MRP-S22) (S22mt) (Mitochondrial small ribosomal subunit protein mS22), MRPS22, C3orf5 RPMS22

**Immunogen:**

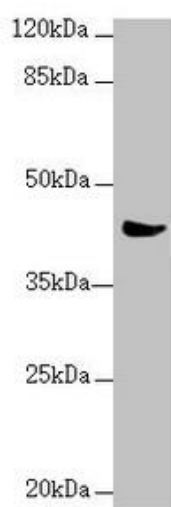
Recombinant Human 28S ribosomal protein S22, mitochondrial protein (1-360AA).

**Storage:**

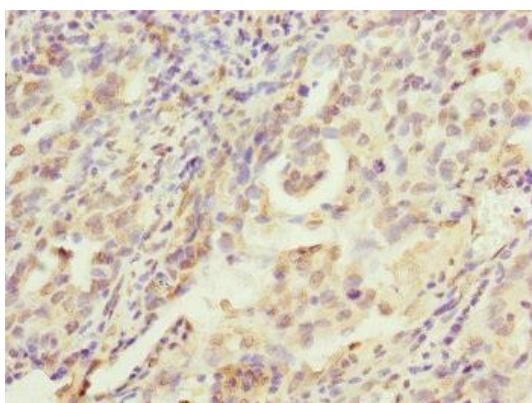
PBS with 0.02% sodium azide, 50% glycerol, pH7.3.

## Product Images

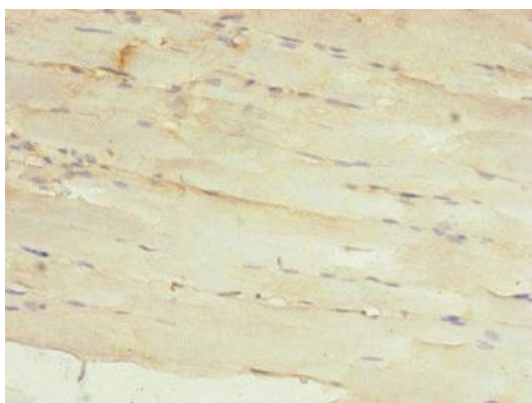
---



Western blot. All lanes: MRPS22 antibody at 2.36  $\mu\text{g/ml}$  + Mouse liver tissue. Secondary. Goat polyclonal to rabbit IgG at 1/10000 dilution. Predicted band size: 42, 19 kDa. Observed band size: 42 kDa.



Immunohistochemistry of paraffin-embedded human lung cancer using PACO45096 at dilution of 1:100.



Immunohistochemistry of paraffin-embedded human skeletal muscle tissue using PACO45096 at dilution of 1:100.