

# NEDD1 Antibody



PACO45100

---

## Product Information

**Size:**

50ul

**Reactivity:**

Human, Mouse

**Source:**

Rabbit

**Isotype:**

IgG

**Applications:**

ELISA, WB, IHC, IP

**Recommended dilutions:**

ELISA:1:2000-1:10000, WB:1:1000-1:5000,  
IHC:1:20-1:200, IP:1:200-1:2000

**Protein Background:**

Required for mitosis progression. Promotes the nucleation of microtubules from the spindle.

**Gene ID:**

NEDD1

**Uniprot**

Q8NHV4

**Synonyms:**

Protein NEDD1 (Neural precursor cell expressed developmentally down-regulated protein 1) (NEDD-1), NEDD1

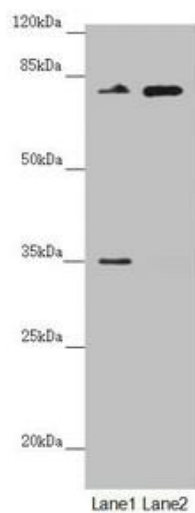
**Immunogen:**

Recombinant Human Protein NEDD1 protein (411-660AA).

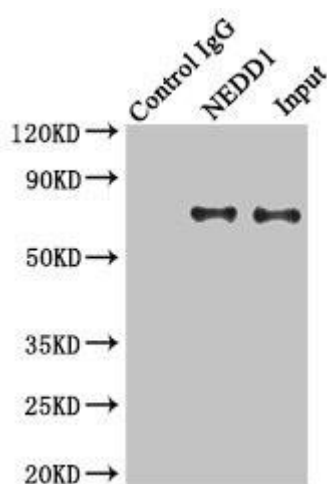
**Storage:**

PBS with 0.02% sodium azide, 50% glycerol, pH7.3.

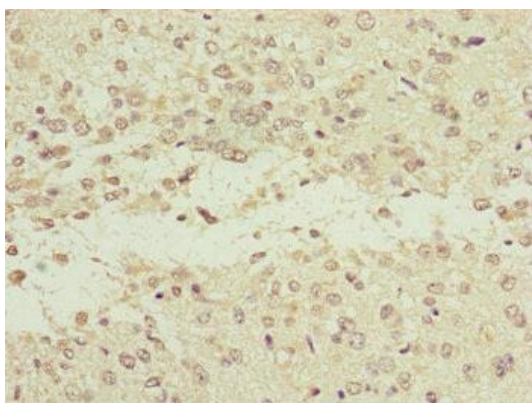
## Product Images



Western blot. All lanes: NEDD1 antibody at 2.66 $\mu$ g/ml. Lane 1: Mouse brain tissue. Lane 2: Jurkat whole cell lysate. Secondary: Goat polyclonal to rabbit IgG at 1/10000 dilution. Predicted band size: 72, 63, 73 kDa. Observed band size: 72 kDa.



Immunoprecipitating NEDD1 in HeLa whole cell lysate. Lane 1: Rabbit control IgG instead of (1 $\mu$ g) instead of PACO45100 in HeLa whole cell lysate. For western blotting, a HRP-conjugated light chain specific antibody was used as the Secondary antibody (1/50000). Lane 2: PACO45100 (4 $\mu$ g) + HeLa whole cell lysate (500 $\mu$ g). Lane 3: HeLa whole cell lysate (20 $\mu$ g).



Immunohistochemistry of paraffin-embedded human glioma using PACO45100 at dilution of 1:100.