

## Product Information

**Size:**

50ul

**Reactivity:**

Human

**Source:**

Rabbit

**Isotype:**

IgG

**Applications:**

ELISA, WB, IHC

**Recommended dilutions:**

ELISA:1:2000-1:10000, WB:1:1000-1:5000,  
IHC:1:20-1:200

**Protein Background:**

Required for the assembly of the ubiquinol-cytochrome c reductase complex (mitochondrial respiratory chain complex III or cytochrome b-c1 complex). Plays a role in the modulation of respiratory chain activities such as oxygen consumption and ATP production and via its modulation of the respiratory chain activity can regulate skeletal muscle differentiation and insulin secretion by pancreatic beta-cells. Involved in cytochrome b translation and/or stability.

**Gene ID:**

UQCC2

**Uniprot**

Q9BRT2

**Synonyms:**

Ubiquinol-cytochrome-c reductase complex assembly factor 2 (Breast cancer-associated protein SGA-81M) (Mitochondrial nucleoid factor 1) (Mitochondrial protein M19), UQCC2, C6orf125 MNF1

**Immunogen:**

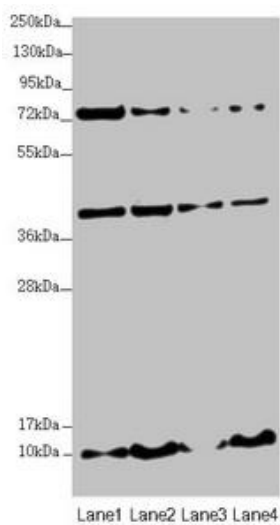
Recombinant Human Ubiquinol-cytochrome-c reductase complex assembly factor 2 protein (14-126AA).

**Storage:**

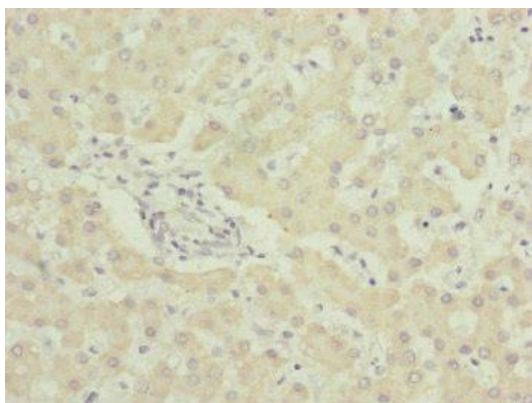
PBS with 0.02% sodium azide, 50% glycerol, pH7.3.

## Product Images

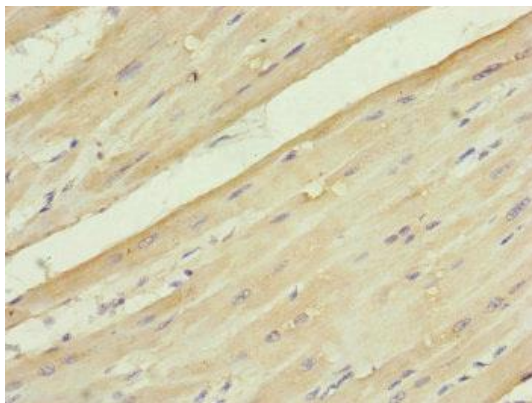
---



Western blot. All lanes: UQCC2 antibody at 3.35  $\mu\text{g/ml}$ . Lane 1: HepG2 whole cell lysate. Lane 2: 293T whole cell lysate. Lane 3: Jurkat whole cell lysate. Lane 4: A431 whole cell lysate. Secondary: Goat polyclonal to rabbit IgG at 1/10000 dilution. Predicted band size: 15 kDa. Observed band size: 15, 40, 80 kDa.



Immunohistochemistry of paraffin-embedded human liver tissue using PACO45123 at dilution of 1:100.



Immunohistochemistry of paraffin-embedded human heart tissue using PACO45123 at dilution of 1:100.