

CHCHD3 Antibody



PACO45128

Product Information

Size:

50ul

Reactivity:

Human, Mouse

Source:

Rabbit

Isotype:

IgG

Applications:

ELISA, WB, IHC

Recommended dilutions:

ELISA:1:2000-1:10000, WB:1:1000-1:5000,
IHC:1:20-1:200

Protein Background:

Component of the MICOS complex, a large protein complex of the mitochondrial inner membrane that plays crucial roles in the maintenance of crista junctions, inner membrane architecture, and formation of contact sites to the outer membrane. Has also been shown to function as a transcription factor which binds to the BAG1 promoter and represses BAG1 transcription. Plays an important role in the maintenance of the MICOS complex stability and the mitochondrial cristae morphology.

Gene ID:

CHCHD3

Uniprot

Q9NX63

Synonyms:

MICOS complex subunit MIC19 (Coiled-coil-helix-coiled-coil-helix domain-containing protein 3), CHCHD3, MIC19 MINOS3

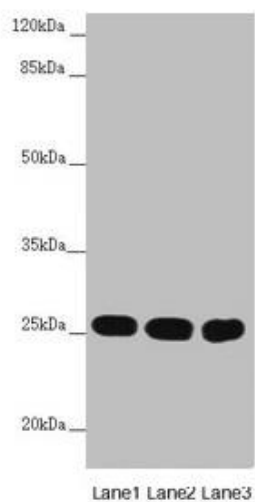
Immunogen:

Recombinant Human MICOS complex subunit MIC19 protein (1-227AA).

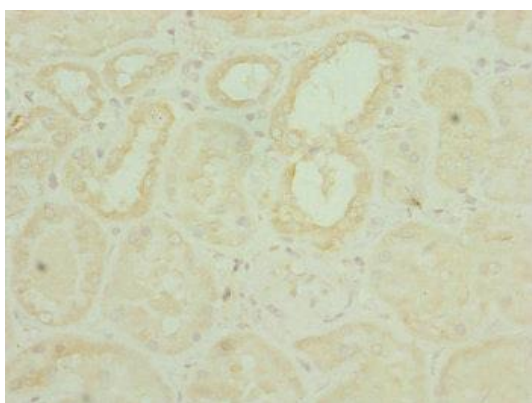
Storage:

PBS with 0.02% sodium azide, 50% glycerol, pH7.3.

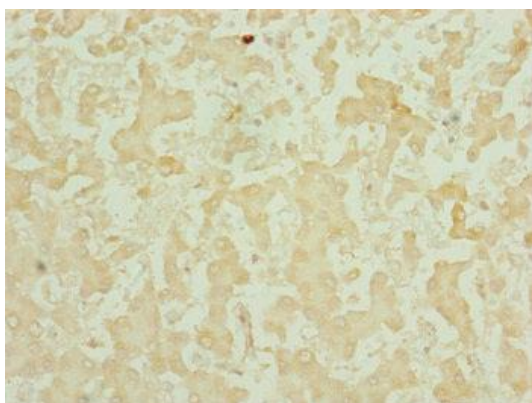
Product Images



Western blot. All lanes: CHCHD3 antibody at 1.67 μ g/ml. Lane 1: Mouse lung tissue. Lane 2: HepG2 whole cell lysate. Lane 3: Hela whole cell lysate. Secondary. Goat polyclonal to rabbit IgG at 1/10000 dilution. Predicted band size: 26 kDa. Observed band size: 26 kDa.



Immunohistochemistry of paraffin-embedded human kidney tissue using PACO45128 at dilution of 1:100.



Immunohistochemistry of paraffin-embedded human liver tissue using PACO45128 at dilution of 1:100.