

# MTIF3 Antibody



PACO45153

---

## Product Information

**Size:**

50ul

**Reactivity:**

Human, Mouse, Rat

**Source:**

Rabbit

**Isotype:**

IgG

**Applications:**

ELISA, WB, IHC

**Recommended dilutions:**

ELISA:1:2000-1:10000, WB:1:1000-1:5000,  
IHC:1:20-1:200

**Protein Background:**

IF-3 binds to the 28S ribosomal subunit and shifts the equilibrium between 55S ribosomes and their 39S and 28S subunits in favor of the free subunits, thus enhancing the availability of 28S subunits on which protein synthesis initiation begins.

**Gene ID:**

MTIF3

**Uniprot**

Q9H2K0

**Synonyms:**

Translation initiation factor IF-3, mitochondrial (IF-3(Mt)) (IF-3Mt) (IF3(mt)) (IF3mt), MTIF3

**Immunogen:**

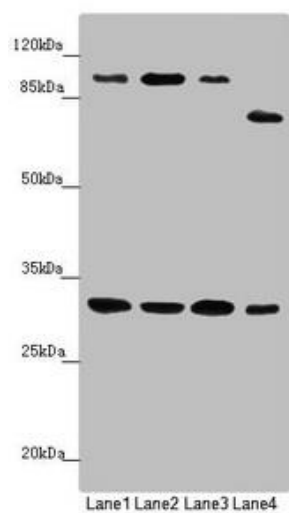
Recombinant Human Translation initiation factor IF-3, mitochondrial protein (1-278AA).

**Storage:**

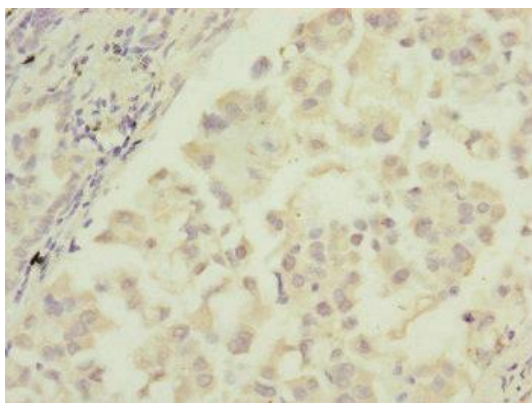
PBS with 0.02% sodium azide, 50% glycerol, pH7.3.

## Product Images

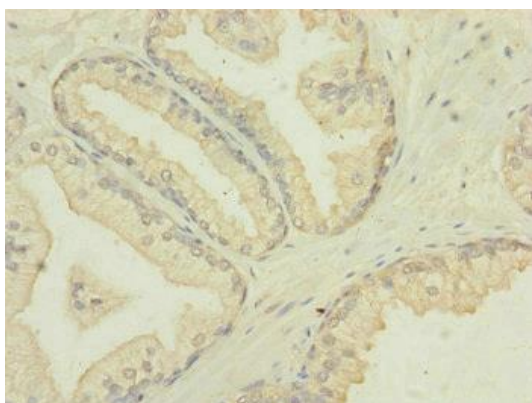
---



Western blot. All lanes: MTIF3 antibody at 1.15  $\mu\text{g/ml}$ . Lane 1: Mouse small intestine tissue. Lane 2: Rat heart tissue. Lane 3: Mouse liver tissue. Lane 4: Hela whole cell lysate. Secondary. Goat polyclonal to rabbit IgG at 1/10000 dilution. Predicted band size: 32 kDa. Observed band size: 32, 100, 75 kDa.



Immunohistochemistry of paraffin-embedded human lung cancer using PACO45153 at dilution of 1:100.



Immunohistochemistry of paraffin-embedded human prostate cancer using PACO45153 at dilution of 1:100.