

MYL1 Antibody



PACO45155

Product Information

Size:

50ul

Reactivity:

Human

Source:

Rabbit

Isotype:

IgG

Applications:

ELISA, IHC

Recommended dilutions:

ELISA:1:2000-1:10000, IHC:1:20-1:200

Protein Background:

Regulatory light chain of myosin. Does not bind calcium.

Gene ID:

MYL1

Uniprot

P05976

Synonyms:

Myosin light chain 1/3, skeletal muscle isoform (MLC1/MLC3) (MLC1F/MLC3F) (Myosin light chain alkali 1/2) (Myosin light chain A1/A2), MYL1

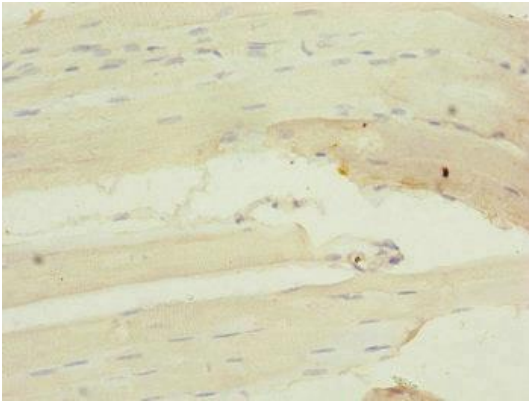
Immunogen:

Recombinant Human Myosin light chain 1/3, skeletal muscle isoform protein (1-150AA).

Storage:

PBS with 0.02% sodium azide, 50% glycerol, pH7.3.

Product Images



Immunohistochemistry of paraffin-embedded human skeletal muscle tissue using PACO45155 at dilution of 1:100.