

### Product Information

**Size:**

50ul

**Reactivity:**

Human

**Source:**

Rabbit

**Isotype:**

IgG

**Applications:**

ELISA, IHC

**Recommended dilutions:**

ELISA:1:2000-1:10000, IHC:1:20-1:200

**Protein Background:**

Part of ribonuclease P, a protein complex that generates mature tRNA molecules by cleaving their 5'-ends. May function with RPP38 to coordinate the nucleolar targeting and/or assembly of RNase P.

**Gene ID:**

POP4

**Uniprot**

O95707

**Synonyms:**

Ribonuclease P protein subunit p29 (hPOP4) (EC 3.1.26.5), POP4, RPP29

**Immunogen:**

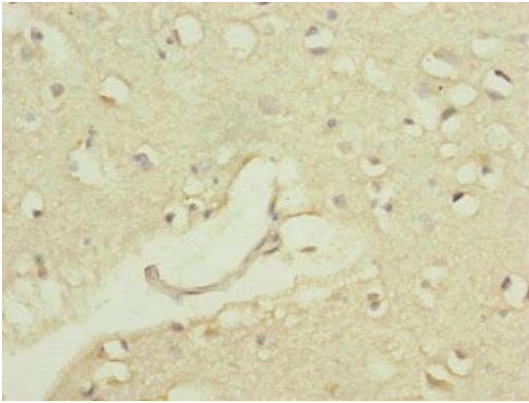
Recombinant Human Ribonuclease P protein subunit p29 protein (1-220AA).

**Storage:**

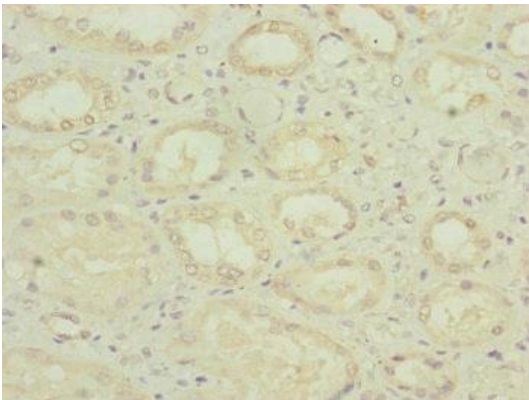
PBS with 0.02% sodium azide, 50% glycerol, pH7.3.

## Product Images

---



Immunohistochemistry of paraffin-embedded human brain tissue using PACO45162 at dilution of 1:100.



Immunohistochemistry of paraffin-embedded human kidney tissue using PACO45162 at dilution of 1:100.