

MID2 Antibody



PACO45186

Product Information

Size:

50ul

Reactivity:

Human

Source:

Rabbit

Isotype:

IgG

Applications:

ELISA, IHC, IF

Recommended dilutions:

ELISA:1:2000-1:10000, IHC:1:20-1:200,
IF:1:50-1:200

Protein Background:

May play a role in microtubule stabilization.

Gene ID:

MID2

Uniprot

Q9UJV3

Synonyms:

Probable E3 ubiquitin-protein ligase MID2 (EC 2.3.2.27) (Midin-2) (Midline defect 2) (Midline-2) (RING finger protein 60) (RING-type E3 ubiquitin transferase MID2) (Tripartite motif-containing protein 1), MID2, FXY2 RNF60 TRIM1

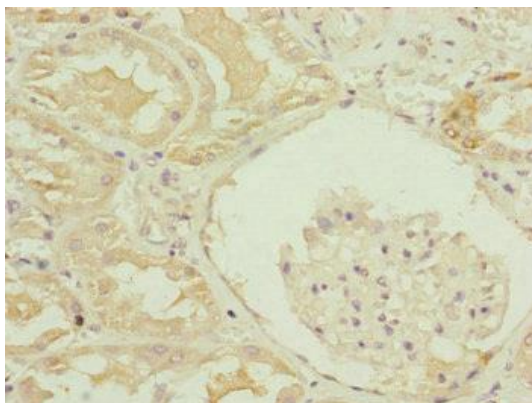
Immunogen:

Recombinant Human Probable E3 ubiquitin-protein ligase MID2 protein (506-735AA).

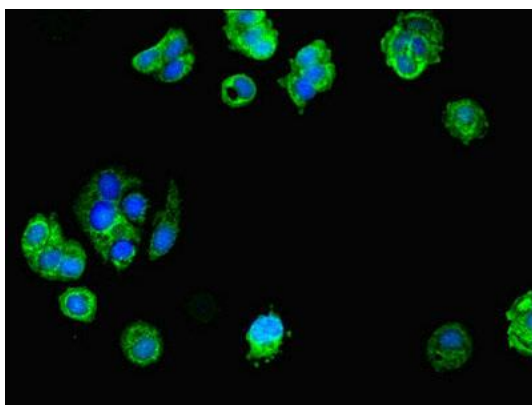
Storage:

PBS with 0.02% sodium azide, 50% glycerol, pH7.3.

Product Images



Immunohistochemistry of paraffin-embedded human kidney tissue using PACO45186 at dilution of 1:100.



Immunofluorescent analysis of MCF-7 cells using PACO45186 at dilution of 1:100 and Alexa Fluor 488-conjugated AffiniPure Goat Anti-Rabbit IgG(H+L).