

PACO45188

Product Information

Size:

50ul

Reactivity:

Human

Source:

Rabbit

Isotype:

IgG

Applications:

ELISA, WB, IHC, IF

Recommended dilutions:

ELISA:1:2000-1:10000, WB:1:500-1:2000,
IHC:1:20-1:200, IF:1:50-1:200

Protein Background:

Accessory subunit of the mitochondrial membrane respiratory chain NADH dehydrogenase (Complex I), that is believed not to be involved in catalysis. Complex I functions in the transfer of electrons from NADH to the respiratory chain. The immediate electron acceptor for the enzyme is believed to be ubiquinone.

Gene ID:

NDUFA12

Uniprot

Q9UI09

Synonyms:

NADH dehydrogenase [ubiquinone] 1 alpha subcomplex subunit 12 (13 kDa differentiation-associated protein) (Complex I-B17.2) (CI-B17.2) (CIB17.2) (NADH-ubiquinone oxidoreductase subunit B17.2), NDUFA12, DAP13

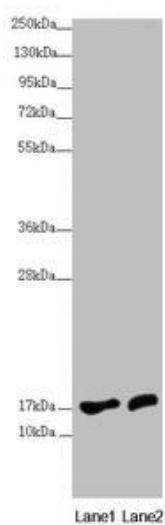
Immunogen:

Recombinant Human NADH dehydrogenase [ubiquinone] 1 α subcomplex subunit 12 protein (1-145AA).

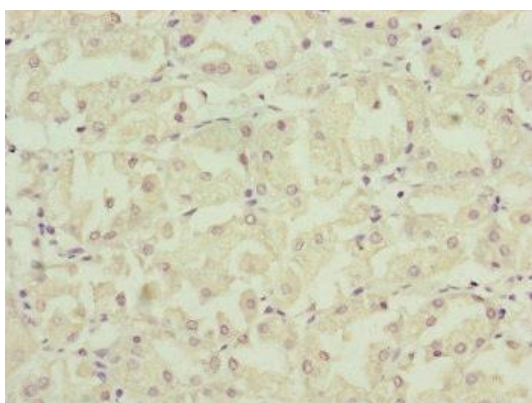
Storage:

PBS with 0.02% sodium azide, 50% glycerol, pH7.3.

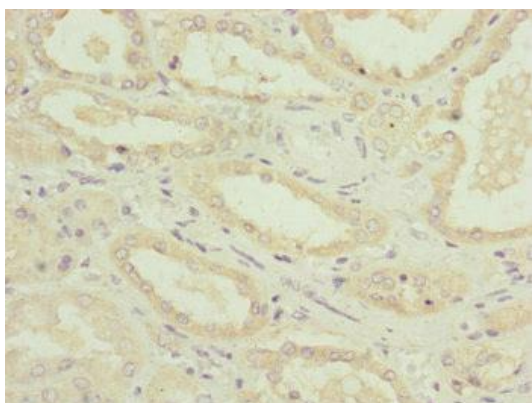
Product Images



Western blot. All lanes: NDUF A12 antibody at 3.71 μ g/ml. Lane 1: HepG2 whole cell lysate. Lane 2: 293T whole cell lysate. Secondary. Goat polyclonal to rabbit IgG at 1/10000 dilution. Predicted band size: 18, 8 kDa. Observed band size: 18 kDa.



Immunohistochemistry of paraffin-embedded human gastric cancer using PACO45188 at dilution of 1:100.



Immunohistochemistry of paraffin-embedded human kidney tissue using PACO45188 at dilution of 1:100.