

PACO45190

Product Information

Size:

50ul

Reactivity:

Human

Source:

Rabbit

Isotype:

IgG

Applications:

ELISA, WB, IHC

Recommended dilutions:

ELISA:1:2000-1:10000, WB:1:1000-1:5000,
IHC:1:20-1:200

Protein Background:

Accessory subunit of the mitochondrial membrane respiratory chain NADH dehydrogenase (Complex I), that is believed not to be involved in catalysis. Complex I functions in the transfer of electrons from NADH to the respiratory chain. The immediate electron acceptor for the enzyme is believed to be ubiquinone.

Gene ID:

NDUFB10

Uniprot

O96000

Synonyms:

NADH dehydrogenase [ubiquinone] 1 beta subcomplex subunit 10 (Complex I-PDSW) (CI-PDSW) (NADH-ubiquinone oxidoreductase PDSW subunit), NDUFB10

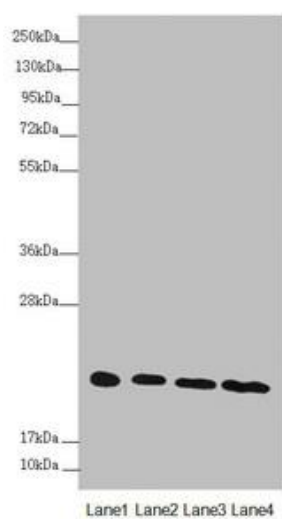
Immunogen:

Recombinant Human NADH dehydrogenase [ubiquinone] 1 β subcomplex subunit 10 protein (1-172AA).

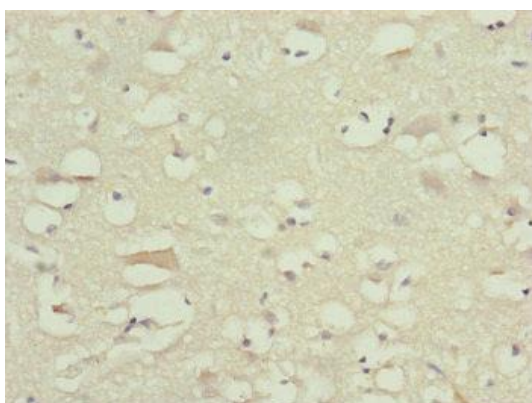
Storage:

PBS with 0.02% sodium azide, 50% glycerol, pH7.3.

Product Images



Western blot. All lanes: NDUFB10 antibody at 3.04 $\mu\text{g/ml}$. Lane 1: HeLa whole cell lysate. Lane 2: Jurkat whole cell lysate. Lane 3: HepG2 whole cell lysate. Lane 4: 293T whole cell lysate. Secondary. Goat polyclonal to rabbit IgG at 1/10000 dilution. Predicted band size: 21 kDa. Observed band size: 21 kDa.



Immunohistochemistry of paraffin-embedded human brain tissue using PACO45190 at dilution of 1:100.