

Product Information

Size:

50ul

Reactivity:

Human

Source:

Rabbit

Isotype:

IgG

Applications:

ELISA, WB, IHC

Recommended dilutions:

ELISA:1:2000-1:10000, WB:1:1000-1:5000,
IHC:1:20-1:200

Protein Background:

Acts as an E3 ubiquitin-protein ligase. In the presence of the human cytomegalovirus (HCMV) protein UL144, participates in 'Lys-63'-linked auto-ubiquitination of TRAF6 resulting in the virally controlled activation of NF-kappa-B at early time of infection. The C-terminus can act as an allosteric activator of the cholera toxin catalytic subunit.

Gene ID:

TRIM23

Uniprot

P36406

Synonyms:

E3 ubiquitin-protein ligase TRIM23 (EC 2.3.2.27) (ADP-ribosylation factor domain-containing protein 1) (GTP-binding protein ARD-1) (RING finger protein 46) (RING-type E3 ubiquitin transferase TRIM23) (Tripartite motif-containing protein 23), TRIM23, ARD1 ARFD1 RNF46

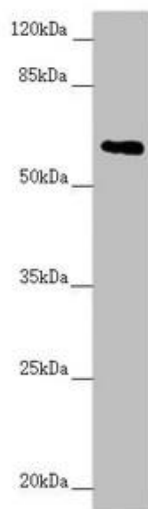
Immunogen:

Recombinant Human E3 ubiquitin-protein ligase TRIM23 protein (1-280AA).

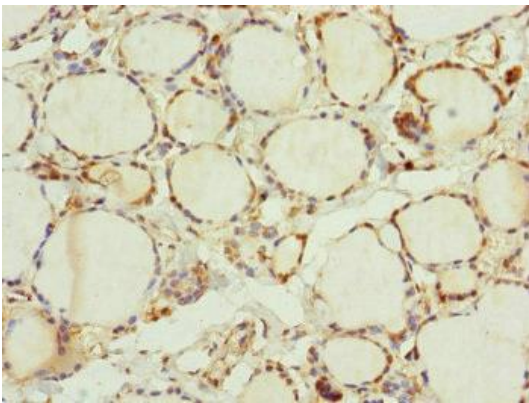
Storage:

PBS with 0.02% sodium azide, 50% glycerol, pH7.3.

Product Images



Western blot. All lanes: TRIM23 antibody at 2.67 $\mu\text{g/ml}$ + Raw264.7 whole cell lysate. Secondary. Goat polyclonal to rabbit IgG at 1/10000 dilution. Predicted band size: 65, 64, 62 kDa. Observed band size: 65 kDa.



Immunohistochemistry of paraffin-embedded human thyroid tissue using PACO45210 at dilution of 1:100.