

Product Information

Size:

50ul

Reactivity:

Human

Source:

Rabbit

Isotype:

IgG

Applications:

ELISA, IHC

Recommended dilutions:

ELISA:1:2000-1:10000, IHC:1:20-1:200

Protein Background:

This is a component of the ubiquinol-cytochrome c reductase complex (complex III or cytochrome b-c1 complex), which is part of the mitochondrial respiratory chain. This subunit interacts with cytochrome c1.

Gene ID:

UQCR10

Uniprot

Q9UDW1

Synonyms:

Cytochrome b-c1 complex subunit 9 (Complex III subunit 9) (Complex III subunit X) (Cytochrome c1 non-heme 7 kDa protein) (Ubiquinol-cytochrome c reductase complex 7.2 kDa protein), UQCR10, UCRC

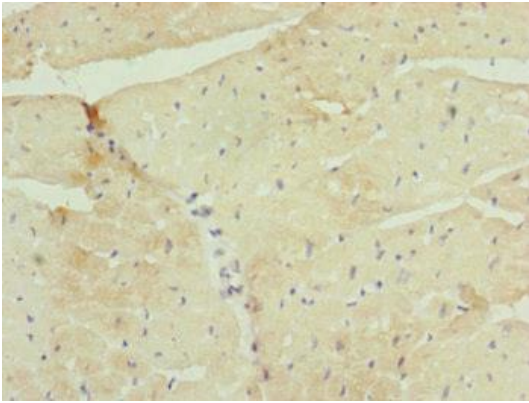
Immunogen:

Recombinant Human Cytochrome b-c1 complex subunit 9 protein (1-63AA).

Storage:

PBS with 0.02% sodium azide, 50% glycerol, pH7.3.

Product Images



Immunohistochemistry of paraffin-embedded human heart tissue using PACO45213 at dilution of 1:100.



Immunohistochemistry of paraffin-embedded human skeletal muscle tissue using PACO45213 at dilution of 1:100.