

# CDC45 Antibody



PACO45222

---

## Product Information

**Size:**

50ul

**Reactivity:**

Human

**Source:**

Rabbit

**Isotype:**

IgG

**Applications:**

ELISA, WB, IHC, IP, IF

**Recommended dilutions:**

ELISA:1:2000-1:10000, WB:1:1000-1:5000,  
IHC:1:20-1:200, IP:1:200-1:2000, IF:1:50-  
1:200,

**Protein Background:**

Required for initiation of chromosomal DNA replication.

**Gene ID:**

CDC45

**Uniprot**

O75419

**Synonyms:**

Cell division control protein 45 homolog (PORC-PI-1), CDC45, CDC45L CDC45L2

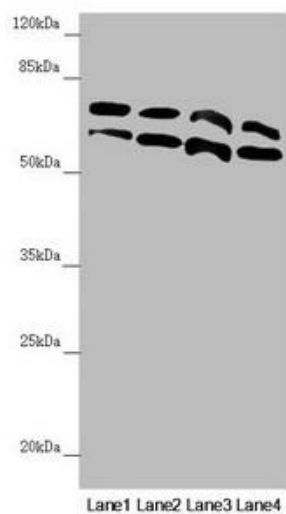
**Immunogen:**

Recombinant Human Cell division control protein 45 homolog protein (1-270AA).

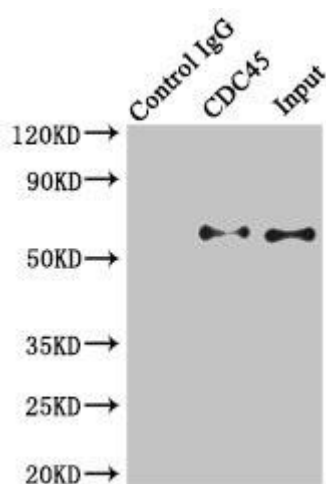
**Storage:**

PBS with 0.02% sodium azide, 50% glycerol, pH7.3.

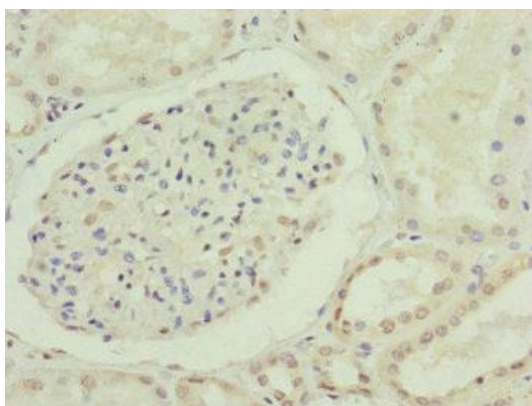
## Product Images



Western blot. All lanes: CDC45 antibody at 0.3 $\mu$ g/ml. Lane 1: K562 whole cell lysate. Lane 2: 293T whole cell lysate. Lane 3: Hela whole cell lysate. Lane 4: Jurkat whole cell lysate. Secondary: Goat polyclonal to rabbit IgG at 1/10000 dilution. Predicted band size: 66, 61, 69 kDa. Observed band size: 66, 69 kDa.



Immunoprecipitating CDC45 in K562 whole cell lysate. Lane 1: Rabbit control IgG instead of (1 $\mu$ g) instead of PACO45222 in K562 whole cell lysate. For western blotting, a HRP-conjugated light chain specific antibody was used as the Secondary antibody (1/50000). Lane 2: PACO45222 (4 $\mu$ g) + K562 whole cell lysate (500 $\mu$ g). Lane 3: K562 whole cell lysate (20 $\mu$ g).



Immunohistochemistry of paraffin-embedded human kidney tissue using PACO45222 at dilution of 1:100.