

PACO45225

Product Information

Size:

50ul

Reactivity:

Human

Source:

Rabbit

Isotype:

IgG

Applications:

ELISA, IHC

Recommended dilutions:

ELISA:1:2000-1:10000, IHC:1:20-1:200

Protein Background:

Serves to link two monomer units of either IgM or IgA. In the case of IgM, the J chain-joined dimer is a nucleating unit for the IgM pentamer, and in the case of IgA it induces larger polymers. It also help to bind these immunoglobulins to secretory component.

Gene ID:

JCHAIN

Uniprot

P01591

Synonyms:

Immunoglobulin J chain (Joining chain of multimeric IgA and IgM), JCHAIN, IGJ IGJ

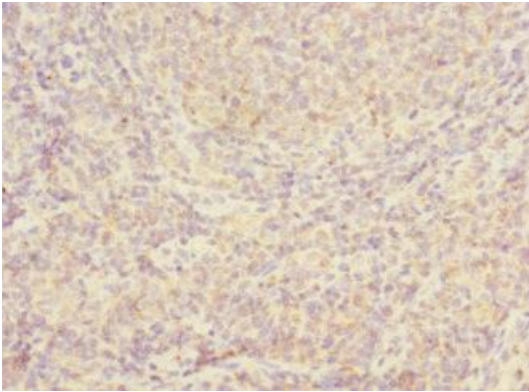
Immunogen:

Recombinant Human Immunoglobulin J chain protein (23-159AA).

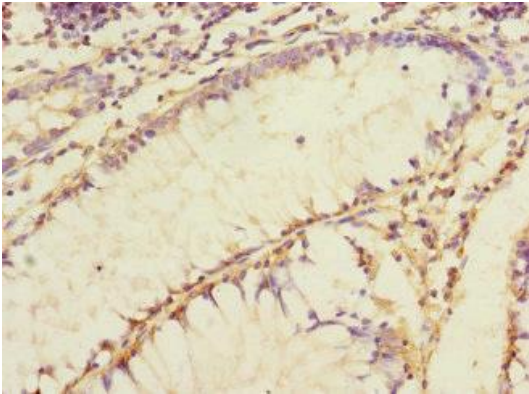
Storage:

PBS with 0.02% sodium azide, 50% glycerol, pH7.3.

Product Images



Immunohistochemistry of paraffin-embedded human tonsil tissue using PACO45225 at dilution of 1:100.



Immunohistochemistry of paraffin-embedded human colon cancer using PACO45225 at dilution of 1:100.