

# SLC30A1 Antibody



PACO45231

---

## Product Information

**Size:**

50ul

**Reactivity:**

Human

**Source:**

Rabbit

**Isotype:**

IgG

**Applications:**

ELISA, WB, IHC

**Recommended dilutions:**

ELISA:1:2000-1:10000, WB:1:1000-1:5000,  
IHC:1:20-1:200

**Protein Background:**

May be involved in zinc transport out of the cell.

**Gene ID:**

SLC30A1

**Uniprot**

Q9Y6M5

**Synonyms:**

Zinc transporter 1 (ZnT-1) (Solute carrier family 30 member 1), SLC30A1, ZNT1

**Immunogen:**

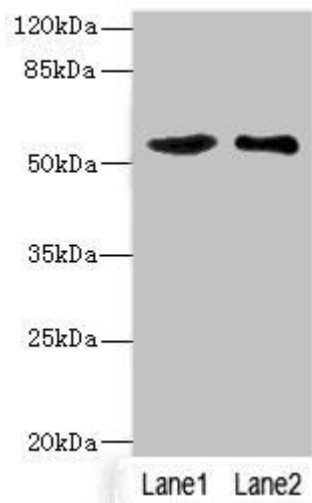
Recombinant Human Zinc transporter 1 protein (328-507AA).

**Storage:**

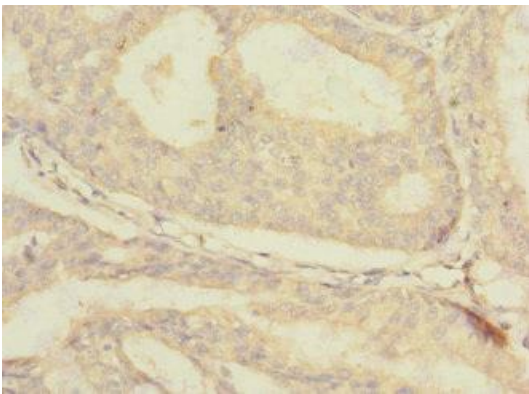
PBS with 0.02% sodium azide, 50% glycerol, pH7.3.

## Product Images

---



Western blot. All lanes: SLC30A1 antibody at 3.75 $\mu$ g/ml. Lane 1: A549 whole cell lysate. Lane 2: HepG2 whole cell lysate. Secondary. Goat polyclonal to rabbit IgG at 1/10000 dilution. Predicted band size: 55 kDa. Observed band size: 55 kDa.



Immunohistochemistry of paraffin-embedded human endometrial cancer using PACO45231 at dilution of 1:100.