

## Product Information

**Size:**

50ul

**Reactivity:**

Human, Mouse

**Source:**

Rabbit

**Isotype:**

IgG

**Applications:**

ELISA, WB, IHC

**Recommended dilutions:**

ELISA:1:2000-1:10000, WB:1:1000-1:5000,  
IHC:1:20-1:200

**Protein Background:**

Inhibits the Wnt/Wingless pathway by binding to CTNNB1/beta-catenin and inhibiting beta-catenin-mediated transcriptional activation through competition with TCF/LEF transcription factors. Has also been shown to play a role in regulating the intracellular trafficking of polycystin-2/PKD2 and possibly of other intracellular proteins. Promotes adipocyte and cardiomyocyte differentiation.

**Gene ID:**

CBY1

**Uniprot**

Q9Y3M2

**Synonyms:**

Protein chibby homolog 1 (ARPP-binding protein) (Cytosolic leucine-rich protein) (PIGEA-14) (PKD2 interactor, Golgi and endoplasmic reticulum-associated 1), CBY1, ARB1 C22orf2 CBY PGEA1

**Immunogen:**

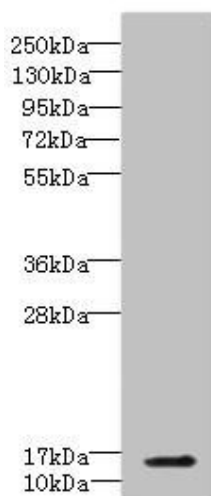
Recombinant Human Protein chibby homolog 1 protein (1-126AA).

**Storage:**

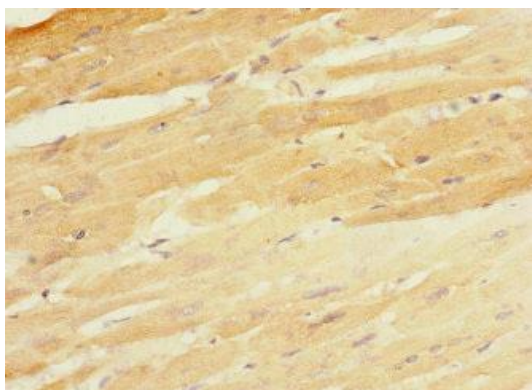
PBS with 0.02% sodium azide, 50% glycerol, pH7.3.

## Product Images

---



Western blot. All lanes: CBY1 antibody IgG at 5.3 $\mu$ g/ml + Mouse lung tissue. Secondary. Goat polyclonal to rabbit IgG at 1/10000 dilution. Predicted band size: 14 kDa. Observed band size: 14 kDa.



Immunohistochemistry of paraffin-embedded human heart tissue using PACO45238 at dilution of 1:100.