

KLHL13 Antibody



PACO45246

Product Information

Size:

50ul

Reactivity:

Human

Source:

Rabbit

Isotype:

IgG

Applications:

ELISA, WB, IHC

Recommended dilutions:

ELISA:1:2000-1:10000, WB:1:1000-1:5000,
IHC:1:20-1:200

Protein Background:

Substrate-specific adapter of a BCR (BTB-CUL3-RBX1) E3 ubiquitin-protein ligase complex required for mitotic progression and cytokinesis. The BCR(KLHL9-KLHL13) E3 ubiquitin ligase complex mediates the ubiquitination of AURKB and controls the dynamic behavior of AURKB on mitotic chromosomes and thereby coordinates faithful mitotic progression and completion of cytokinesis.

Gene ID:

KLHL13

Uniprot

Q9P2N7

Synonyms:

Kelch-like protein 13 (BTB and kelch domain-containing protein 2), KLHL13, BKLHD2
KIAA1309

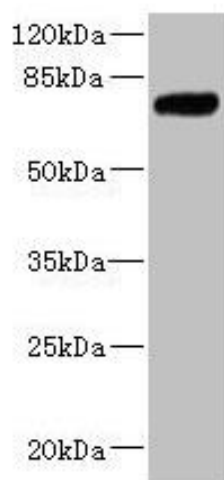
Immunogen:

Recombinant Human Kelch-like protein 13 protein (1-260AA).

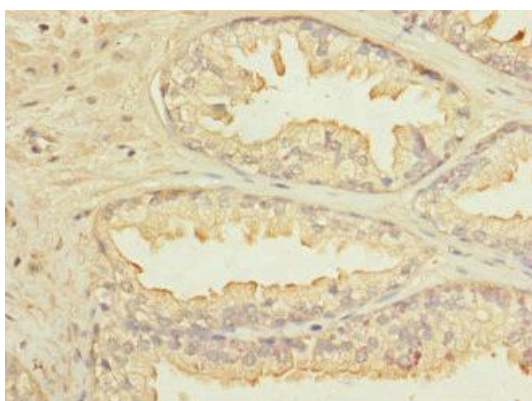
Storage:

PBS with 0.02% sodium azide, 50% glycerol, pH7.3.

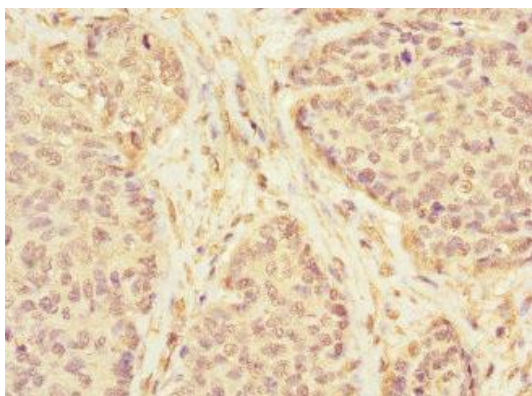
Product Images



Western blot. All lanes: KLHL13 antibody at 5.06 μ g/ml + Jurkat whole cell lysate. Secondary. Goat polyclonal to rabbit IgG at 1/10000 dilution. Predicted band size: 74, 70, 73, 75 kDa. Observed band size: 74 kDa.



Immunohistochemistry of paraffin-embedded human prostate cancer using PACO45246 at dilution of 1:100.



Immunohistochemistry of paraffin-embedded human ovarian cancer using PACO45246 at dilution of 1:100.